

# Windows XP POWER OPTIONS

© Darry D Eggleston, 2006, [DarryD@darryd.com](mailto:DarryD@darryd.com)



Some times my monitor screen goes black and appears to lock up. The only way I can unlock it is to use the Ctrl+Alt+Del key (on the keyboard) combination and that brings is back. Is there a better way?

Yes, and here's how to do it. Although I'll be using Windows XP for this demonstration, the steps are essentially the same in other Windows versions.

1. Open your Select the Control Panel:
  - In Windows 98, 98SE and Me, select Start > Settings > Control Panel.
  - In Windows XP, select Start > Control Panel.



Figure 1

2. Double, left-click on the Power Options icon (Figure 2). All icons are listed left-to-right, top-to-bottom.



Figure 2

3. In "Power Schemes" tab (Figure 3):
  - ❶ Change the three options to "Never."
  - ❷ Click on "Save As..." button.
  - ❸ Give it a name. I use "Darry D" which is my name.
  - ❹ IF this is the only change you wish to make, left-click on "OK" button. Otherwise, continue with this lesson.



Figure 3

4. In the “Advanced” tab (Figure 4), keep your selections simple.

5. I do not use “Hibernate” on my systems because it causes more problems in the home or small office than it solves. If it is checked, you’ll give up 640 Mb of disk space which could be better used for documents you create.



Figure 5

6. If you do not have a Universal Power System (UPS), leave the UPS settings alone (Figure 6). If you have one, follow the manufacturer’s instructions for these settings.

7. Click “OK” button when you’re done.

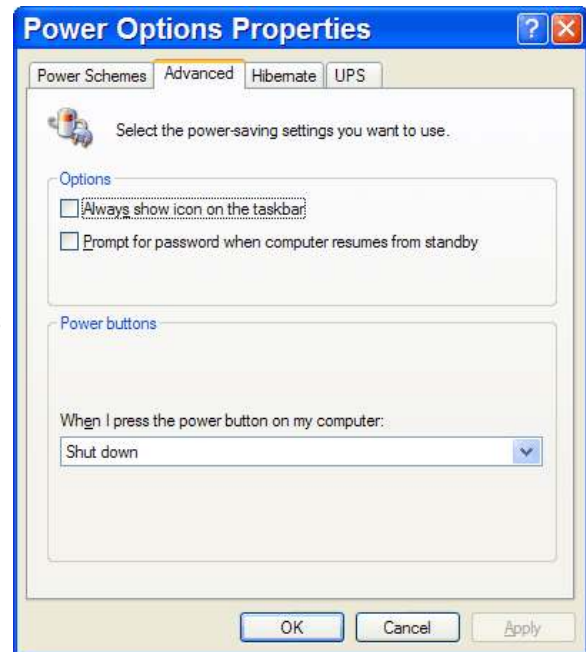


Figure 4

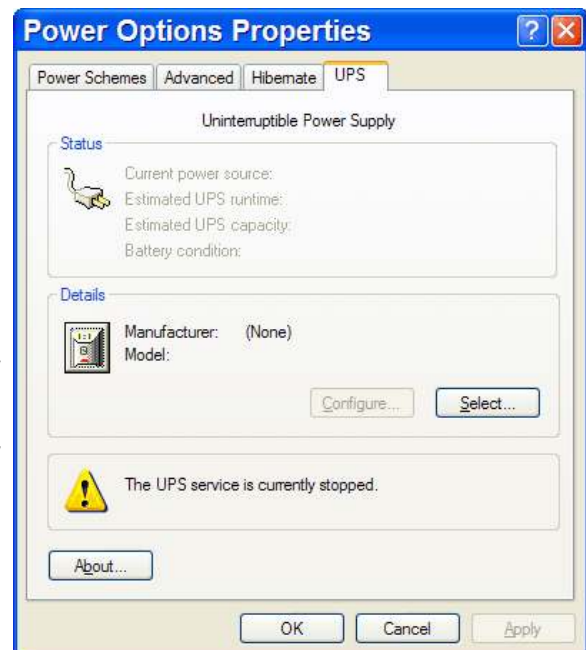


Figure 6