

DISPLAY AT 1024 x 768 PIXELS

© Darry D Eggleston, 813.677.2871, DarryD@darryd.com



Many of the LCD¹ monitors default to a display of 1024 x 768 pixels. The challenge is that, at that resolution, the icons and fonts appear too small. Here's how to fix that display.

1. Away from any icons on the desktop, RIGHT-click and Left-click on "Properties" in the pop-up menu (**Figure 1**).

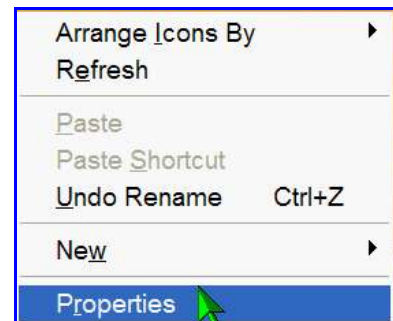


Figure 1



Figure 2

2. In the "Display Properties" window, click on the "Appearance" tab (**Figure 2**).

¹ A liquid crystal display (LCD) is a low-power flat-panel display used in many laptop computers, calculators, digital watches and computer monitors, made up of a liquid crystal that is sandwiched between layers of glass or plastic and becomes opaque when electric current passes through it. The contrast between the opaque and transparent areas forms visible characters. LCDs are slimmer, lighter and consume less power than the previous dominant display type, the cathode ray tube (CRT), hence their importance for portable computers. Since 1995, most notebook computers used this technique.

3. Under the “Appearance”:

- ❶ Select settings you design.
- ❷ Click on the “Advanced” tab.



Figure 4

5. I have set my icon size to 32 and my font to Arial 15 (Figure 5). The default font “Tahoma” looks nice, but it’s too thin for these old eyes.

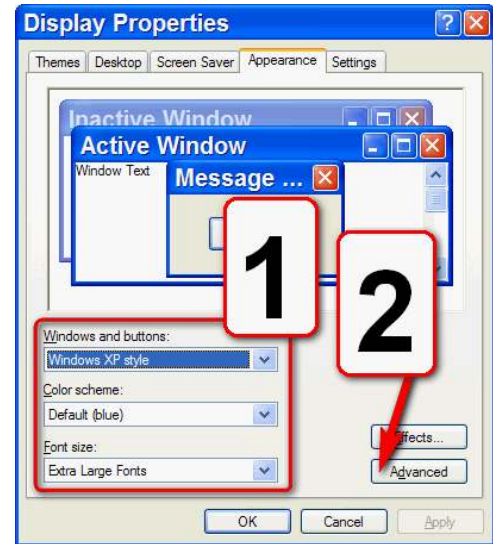


Figure 3

4. Select an Item to change (Figure 4):

- ❶ Left-click on the downward arrowhead.
- ❷ Left-click on “Icon.”



Figure 5

6. Click on the downward arrow, under Icon, as in Step 4 and left-click on “Icon Spacing (Horizontal)” (Figure 6).

7. You’ll have to experiment with how much space you want between the desktop icons (Figure 7).



Figure 7

8. Click on the downward arrow, under Icon, as in Step 4 and left-click on “Icon Spacing (Vertical)” (Figure 8).



Figure 6



Figure 8

9. Again, experiment with the spacing you wish between the desktop icons (Figure 9). I have used 70 pixels.



Figure 9



Figure 10

10. Click on the downward arrow, under Icon, as in Step 4 and left-click on "Message Box" (Figure 10). Again, I selected Arial as the font because it is a broader font.

11. On the Menu (Figure 11), I have selected Arial 14 so I can read the menu items easier.

12. When you're finished making changes, left-click on "OK" button.



Figure 11