

# Windows MOUSE CURSOR SELECTION

© Darry D Eggleston, 813.677.2871, [DarryD@darryd.com](mailto:DarryD@darryd.com)



When the cursor pointers are not what you want, change them.

1. From the Desktop:
  - In Windows 95, 98, Me, select Start > Settings > Control Panel.
  - In Windows XP, select Start > Control Panel
2. Double, left-click on “Mouse.”
3. Left-click on the “Pointers” tab (**Figure 1**).
4. Left-click on “Normal Select.”
5. Left-click on “Browse” button.
6. Find the mouse pointer you want to use. IF you’re using the set I gave to you, examine the “Arrows” choices (**Figure 2**).
7. Left-click on “Open” button.
8. Click on the next item.
9. Repeat Steps 5 – 7 until you get to the end of the options.



Figure 1

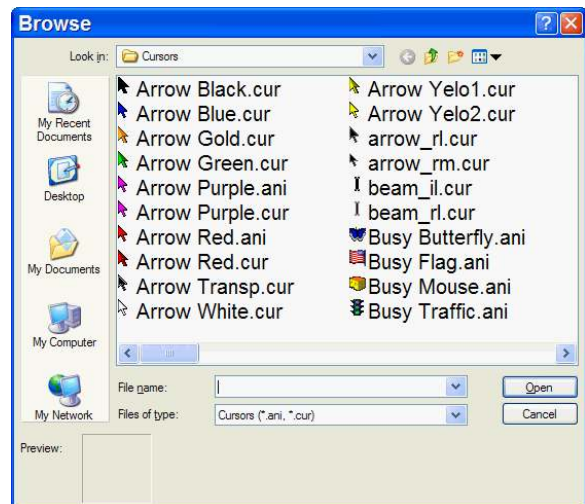


Figure 2

10. Give your assignments a name (Figure 3):

- ❶ Left-click on “Save As” button
- ❷ Type a name for the series of selections you’ve made.
- ❸ Left-click on “OK” button at the bottom of the window.

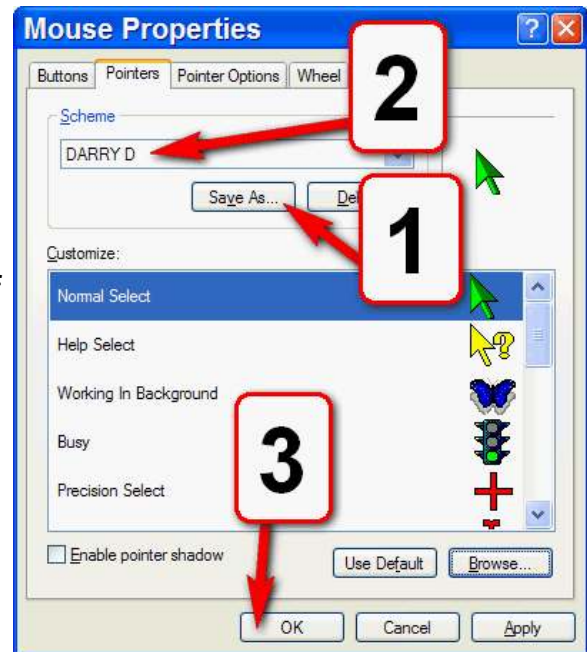


Figure 3

## MOUSE CLICKING

- Left-click places cursor .
- Double, left-click selects a word.
- RIGHT-click to get a pop-up menu.

