

# ASSOCIATE A PROGRAM

© Darry D Eggleston, 813.677.2871, [DarryD@darryd.com](mailto:DarryD@darryd.com)



**QUESTION:** When I try to open it I get this message: **Figure 1.** “Pictures from Home.eml” which I have saved to “My Documents.” I cannot figure out how to do that.

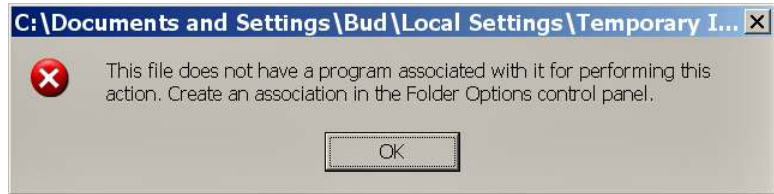


Figure 1

**ANSWER:** The answer is a lot simpler than it might appear. Here’s how.



Figure 2

1. From the desktop, select Start > My Documents (**Figure 2**).

2. Select the file’s properties (**Figure 3**):  
① RIGHT-click on the file.  
② Left-click on “Properties.”



Figure 3

3. Left-click on “Change” button (**Figure 4**).

4. Select “Open With” choice (Figure 5):

❶ Left-click on your choice.

**NOTE:** The first one listed under “Recommended...” is the one Windows recommends.

❷ Touch the *Enter* key, on the keyboard, or left-click on the “OK” button.

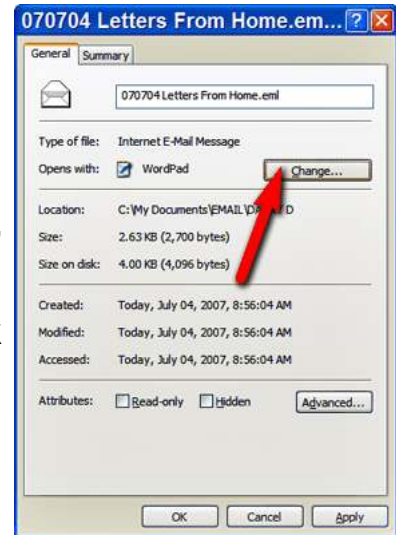


Figure 4

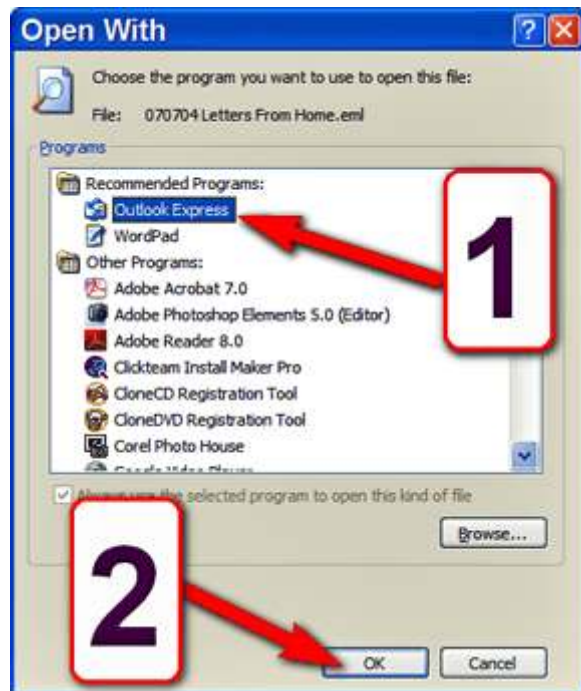


Figure 5

5. Confirm your choice (**Figure 6**):

❶ Check to ensure the program you wanted is listed.

❷ Touch the *Enter* key, on the keyboard, or left-click on the “OK” button.

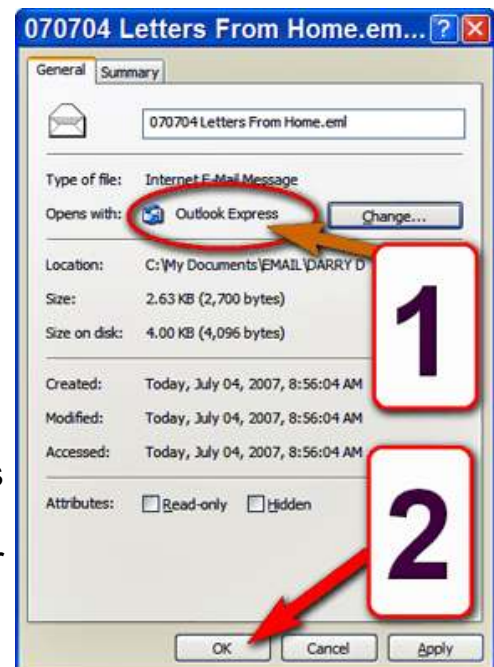


Figure 6