

CLIPART INSERTED INTO A TEXT BOX



© Darry D Eggleston, 813.677.2871, DarryD@darryd.com
Click on the blue, underlined text to go to its linked reference.¹

Most WordPerfect users are aware that one can insert a “text box” (a graphic containing characters) into a document by selecting Insert ► Text Box. However, many do not know that one can insert clipart into a text box along with that text.

Here’s how to do that.

1. From the MenuBar, select Insert ► Text Box (Figure 1).

2. The text box appears on the right margin from the cursor’s position (Figure 2).

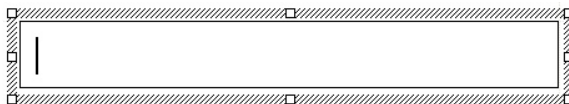


Figure 2

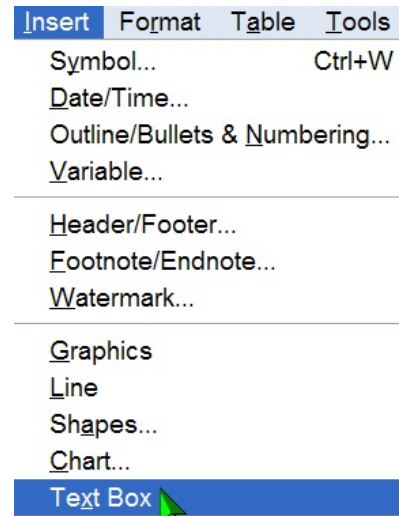


Figure 1

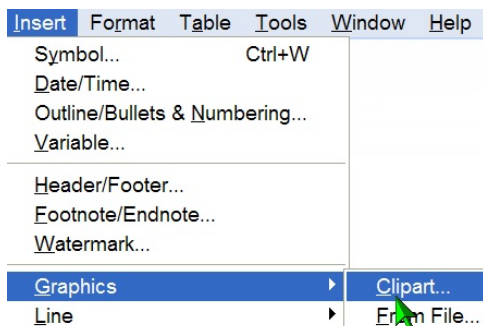


Figure 3

3. From the MenuBar, select Insert ► Graphics ► Clipart (Figure 3).

¹ Permission for reproduction in whole or in part is granted to groups and organizations for internal, non-profit use provided credit is given to the author along with the copyright notice: Article reprinted with permission. Copyright © 2010 Darry D Eggleston, <http://DarryD.com>. Editors: PegEgg Eggleston & Parker Monroe.

4. Select a graphic from your clipart scrapbook (**Figure 4**). NOTE: Your clipart collection will look different than mine.

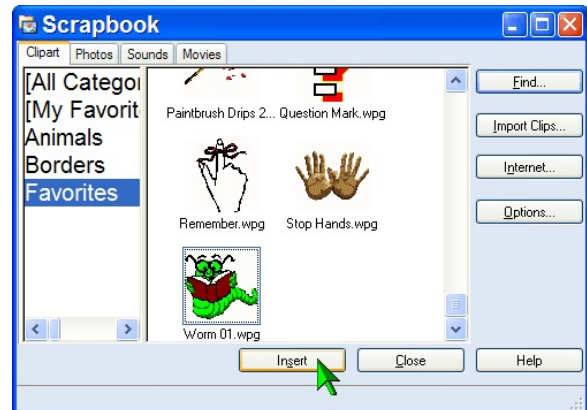


Figure 4

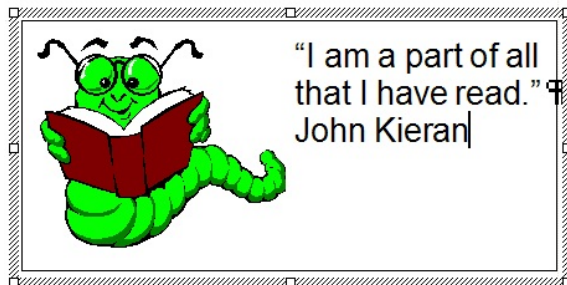


Figure 5

6. Select the text you want to change. (**Figure 6**).

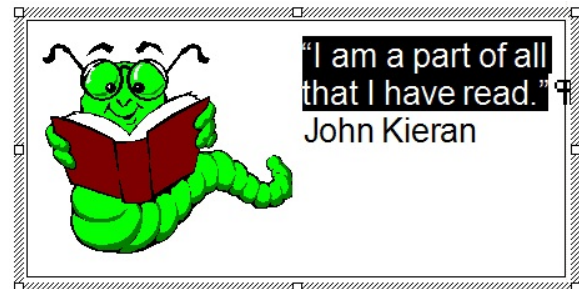


Figure 6

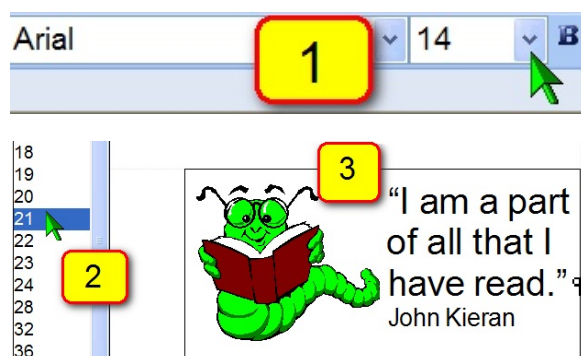


Figure 7

7. Change the font size (**Figure 7**):

- ❶ Click on font size drop-down menu.
- ❷ Slide your cursor down the sizes until you see, in the box, the size you want it to be. Then click.
- ❸ The selected text is the new size.

8. When you click outside of the text box, you will clear it as the selection and you can continue your work.

