

BARS

© Darry D Eggleston, 813.677.2871, DarryD@darryd.com
Click on the blue, underlined text to go to its linked reference.



1. DOCUMENT

This lesson describes the helpful bars in WordPerfect (**Figure 1**).

1-1. TITLEBAR

Found at the very top of the screen, its function is to tell you what document you are working on and where that document is located. As you can see in **Figure 1**, I'm working on a document called "Darry D's Tips 0607" in a folder on the C drive in the "My Documents" folder.

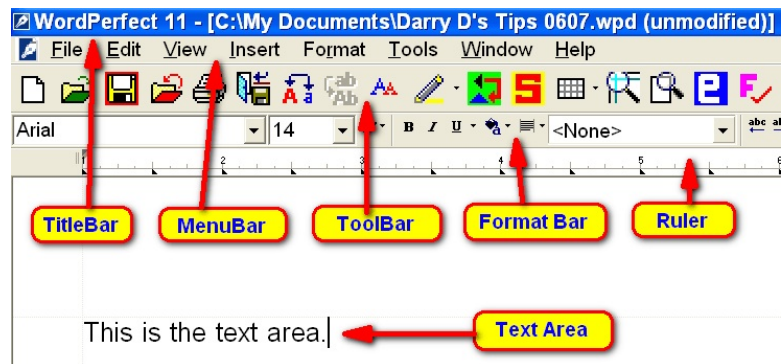


Figure 1

1-2. MENUBAR

This bar begins with File, Edit... and ends with "Help. It offers text-based options for editing, printing, and other functions. The Help menu is the manual for using the program.

1-3. TOOLBAR

This offers graphics-based aids to many of the same functions as the MenuBar. In WordPerfect 11, you can increase the size of the ToolBar by:

- ❶ RIGHT-click on the ToolBar.
- ❷ Left-click on "Settings".
- ❸ Ensure the ToolBar you want to modify is selected and click on the "Options" button.

¹ Permission for reproduction in whole or in part is granted to groups and organizations for internal, non-profit use provided credit is given to the author along with the copyright notice: Article reprinted with permission. Copyright © 2010 Darry D Eggleston, <http://DarryD.com>. Editors: PegEgg Eggleston & Parker Monroe.

- ④ Click on the box (☐) next to “Large Icons” and click “OK”. The new, larger icons show on the ToolBar.
- ⑤ Click on “Close” button.

1-4. FORMAT BAR

This eases the formatting of text. It offers all the font faces, sizes, appearances and justifications.

1-5. RULER

This shows a ruler marked off in $\frac{1}{8}$ -of-an-inch increments.

2. MACRO BARS

When you access macros, you'll see another series of bars, but, they will be in the same order top-to-bottom (Figure 2).

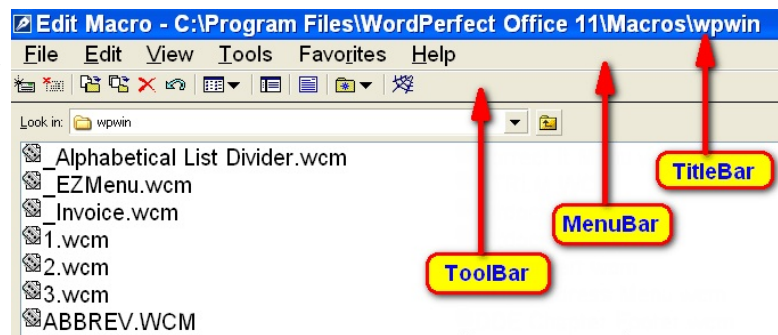


Figure 2

2-1. TITLEBAR

The TitleBar shows that the macros, in order to work properly, need to be located in the folder listed:

C:\Program Files\WordPerfect Office X3\Languages\EN\Macros\WPWin

2-2. MENUBAR

The MenuBar is a word-based offering of options for saving, editing and viewing your macros. Again, the Help menu is the manual for using macros.

2-3. TOOLBAR

The ToolBar is a graphical presentation of choices.

3. GRAPHICS TOOLBAR

When a graphic is inserted, the normal ToolBar and Format Bar disappears but are replaced by a new Graphics ToolBar (**Figure 3**).

NOTE: My Graphics ToolBar has been modified by adding addition icons, beginning with the “CD” icon with red letters and a white background.

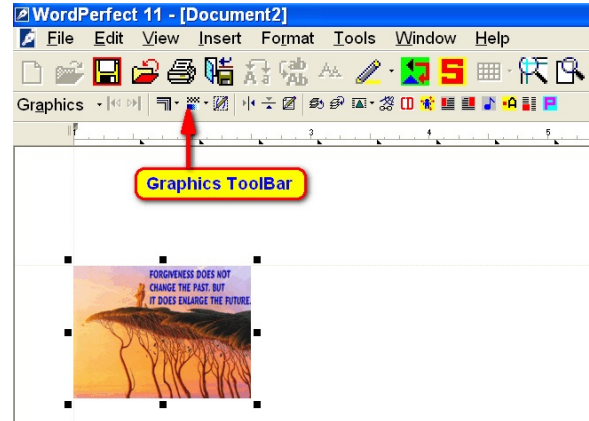


Figure 3