

PhraseExpress EXECUTION OPTIONS

© Darry D Eggleston, DarryD@darryd.com
Click on the blue, underlined text to go to its linked reference.¹



You can change how PhraseExpress executes a command. Here's how.

1. Open PhraseExpress (**Figure 1**) by clicking on its icon & then clicking on “Settings” option.

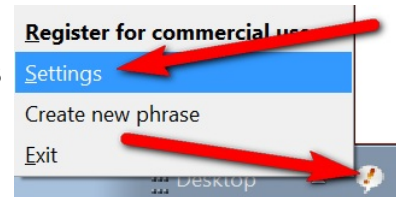


Figure 1

2. Click on the downward arrowhead next to the current command (**Figure 2**), and make a selection.

3. Left-click on “OK” button, in lower-right of window, to save your change.

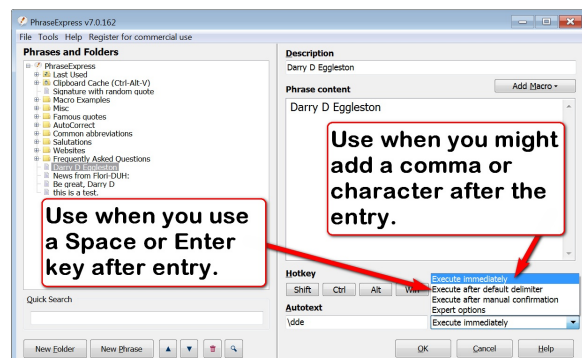


Figure 2

¹ Permission for reproduction in whole or in part is granted to groups and organizations for internal, non-profit use provided credit is given to the author along with the copyright notice: Article reprinted with permission. Copyright © 1996–2010 Darry D Eggleston, <http://DarryD.com>. Editors: PegEgg Eggleston & Parker Monroe.