

# Photoshop Elements ZOOM TOOL

© Darry D Eggleston, 813.677.2871, [DarryD@darryd.com](mailto:DarryD@darryd.com)



Select the Zoom tool (🔍) in the toolbox.

Remember my advice: When in doubt, RIGHT-click.

If you RIGHT-click on a document, you'll see the Zoom tool's dropdown menu (**Figure 1**):

➤ *Fit Screen* scales the image to fit inside the workspace. This may make the magnification higher or lower than 100%, depending on the size of the image and screen resolution and workspace layout.

➤ *Actual Pixels* shows the image at 100% magnification.

➤ *Print Size* approximates the size that the image will be when printed, taking resolution into account. (Since all monitors vary, this should only be considered an approximation.) We'll learn more about resolution later.

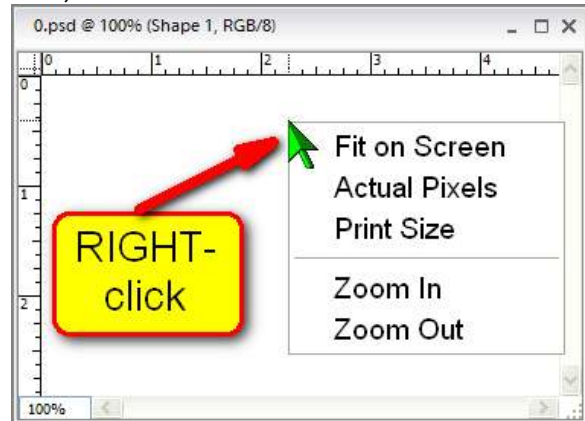


Figure 1

Notice the same three “fit” buttons in the Options Bar — just like the Hand tool (**Figure 2**).

If you want the document window to resize as you zoom in and out, check the “Resize Windows to Fit” box on the options bar.

So there are different ways to change the magnification of your image: the Zoom Control in the Status Bar, the drop-down menu, and double-clicking the Zoom tool.

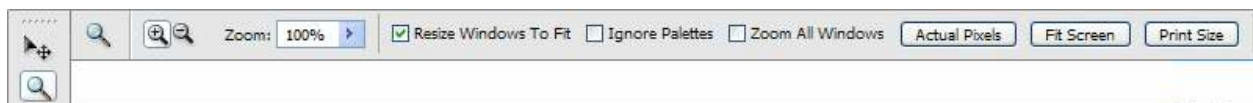


Figure 2

Let's look at a few more examples.

When the zoom tool is selected, the cursor becomes a magnifying glass with a plus sign (**Figure 3**). The plus sign indicates that you're all set to zoom in. All you need to do is click to increase magnification.

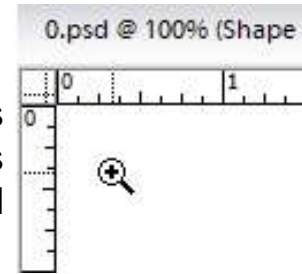


Figure 3

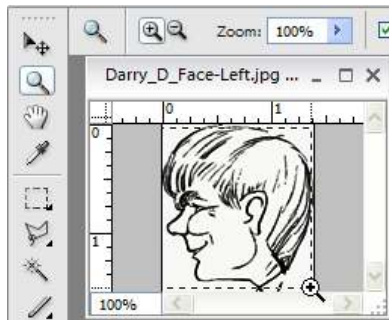


Figure 4

If you want to zoom in on a specific area of the image click and drag a rectangle around the area you want to magnify (**Figure 4**).

This will enlarge the selected area to fill the workspace (**Figure 5**).

Try it.

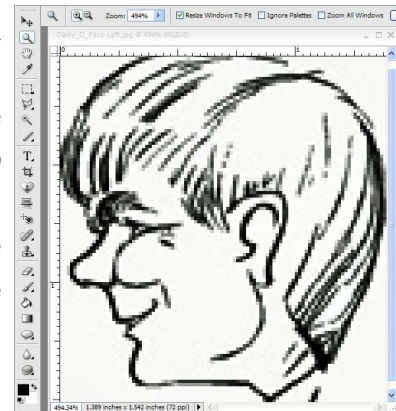


Figure 5

To return to 100% magnification, use the keyboard shortcut, *Ctrl+Alt+0*.



Figure 6

To zoom in without switching to the zoom tool, use Ctrl+ (plus sign). To zoom out, use Ctrl+- (minus sign key).



Figure 7

To switch to zoom out mode, you can click the zoom out button on the options bar. However, it is much easier to use the keyboard shortcuts. When you hold down the Alt key, the zoom cursor will change to a minus sign in the magnifying glass, and you can click to zoom out.

Let's review each of the zoom tool options:

- ✓ No modifier key = click to zoom in; click and drag to zoom into a specific area.
- ✓ Double-click zoom tool button = zoom to 100% magnification.
- ✓ Ctrl+Alt-0 = zoom to 100% magnification.
- ✓ Alt = click to zoom out.

Here are a few more zoom shortcuts we have not yet covered:

- ✓ Ctrl+0 = zoom to fit the screen.
- ✓ Ctrl = temporarily toggles to the move tool.

If you leave the “Resize Windows to Fit” un-checked (**Figure 8**), when you click on the image, it zooms in on the image (**Figure 9**).

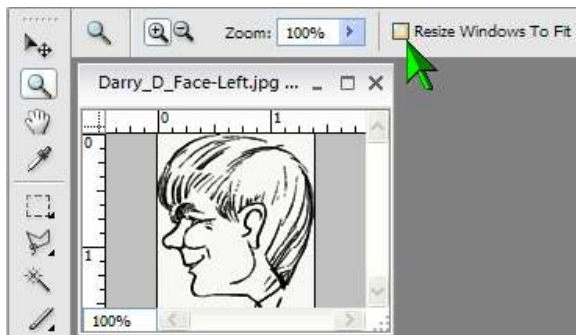


Figure 8



Figure 9

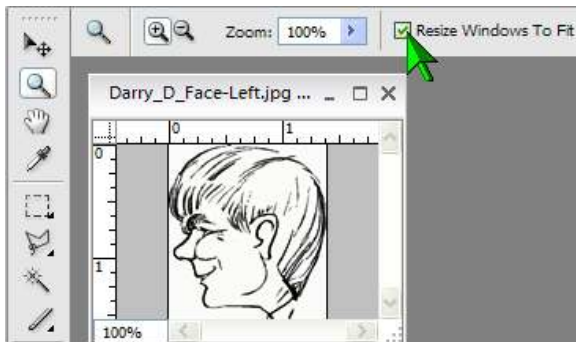


Figure 10

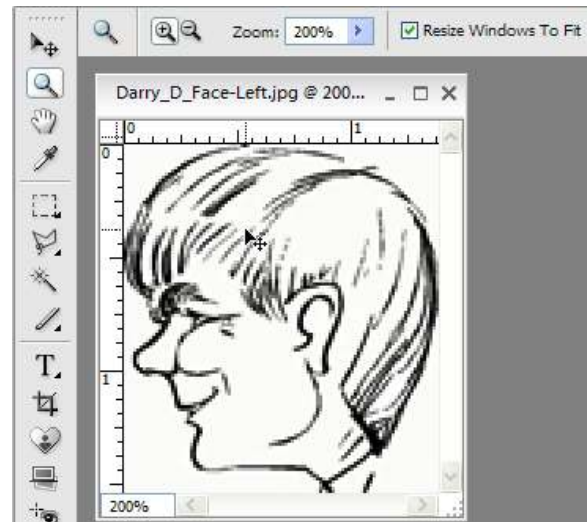


Figure 11

If you check the “Resize Windows to Fit” (**Figure 10**), when you click on the image, the image enlarges (**Figure 11**).

Working in Photoshop Elements usually involves a lot of zooming. By memorizing the most common zoom tool keyboard shortcuts, these actions become automatic and you’ll be able to work much faster.