

QUICK FIX



Quick Fix is an option in Elements that makes photo-editing a breeze. Here's how to use it.

1. In the Browser, select Quick Fix (Figure 1):

- 1 Click on the photo to be edited.
- 2 Click on "Go to Quick Fix..."

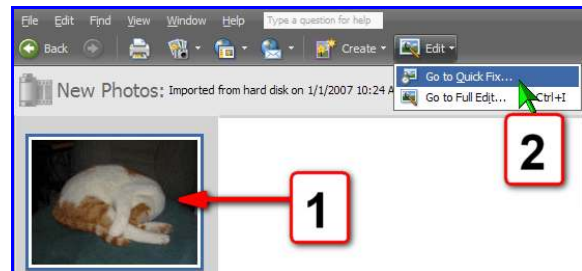


Figure 1

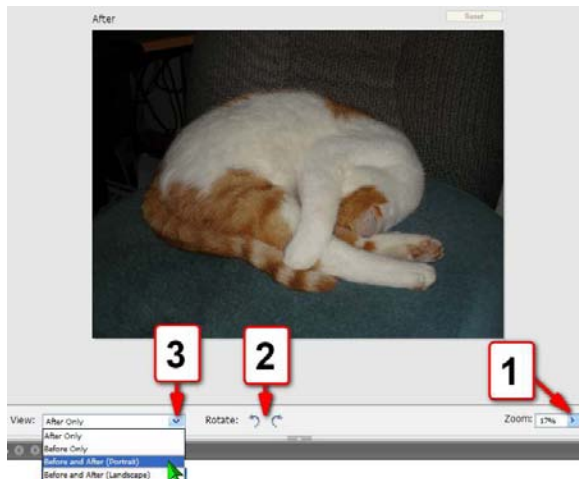


Figure 2

2. Change the view (Figure 2):

- 1 Change the zoom if needed.
- 2 Rotate the photo if needed.
- 3 Click on the down-arrowhead and select "Before and after (Portrait)".

3. Now you'll be able to see the Before and After of the choices you make (Figure 3).



Figure 3

4. The options are presented in the palettes to the right of the work space (Figure 4):

- ❶ Smart Fix — the one you will activate under normal circumstance by clicking on the “Auto” button.
- ❷ Red Eye Fix
- ❸ Levels
- ❹ Contrast
- ❺ Color
- ❻ Sharpen

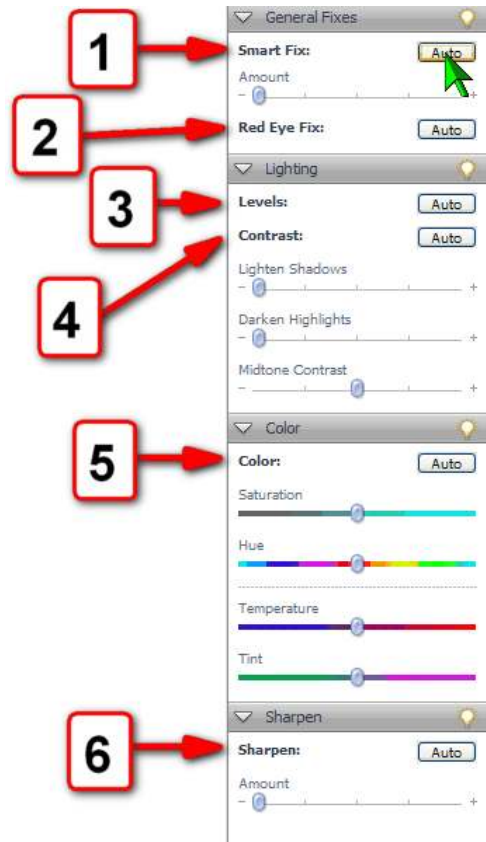


Figure 4

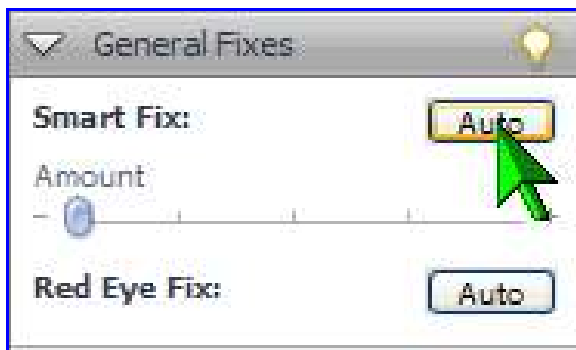


Figure 5

5. In this case, as in the majority of all cases, I will click on the “Auto” button next to “Smart Fix”.

6. Immediately, I see the result of my choice (Figure 6).

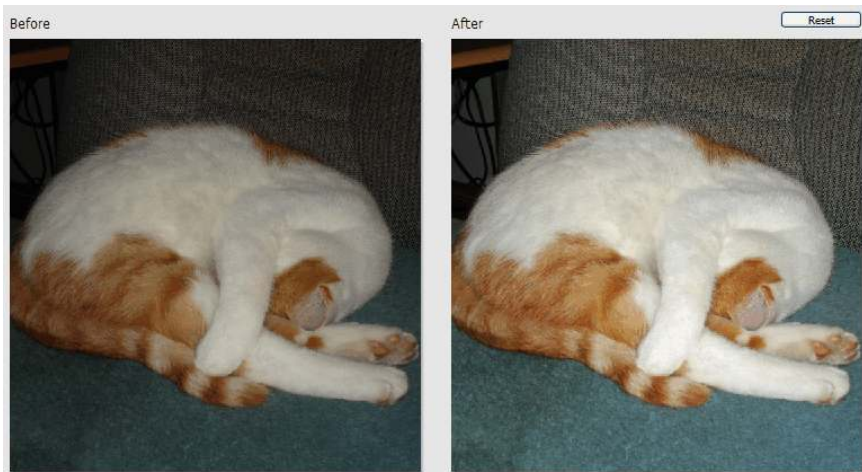


Figure 6

7. Save the result (Figure 7) by clicking on:

- ❶ File
- ❷ Save

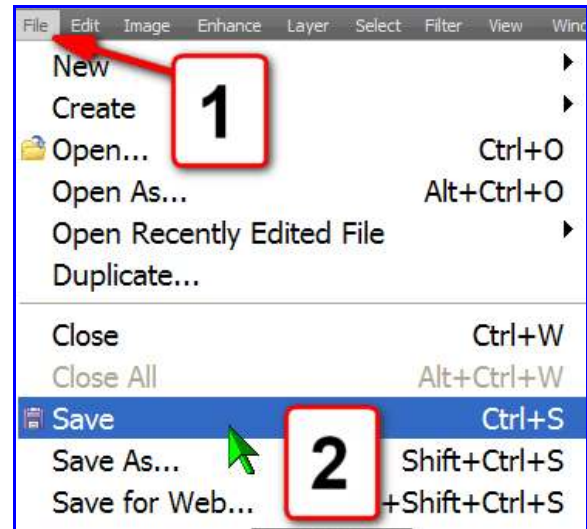


Figure 7

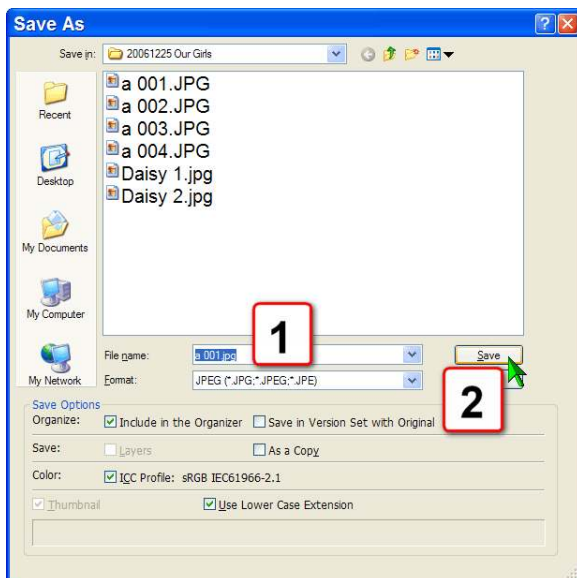


Figure 8

8. Complete the requirements of the “Save As” window:

- ❶ If the name is what you want, leave it alone. If not, type a new name.
- ❷ Touch the *Enter* key, on the keyboard, or click on the “Save” button.

9. If you do not change the name, you’ll get a confirmation window (Figure 9).



Figure 9

10. In either case (keeping the name or changing it), you'll see the "JPEG Options" window:

- ❶ Always save as the maximum quality by left-click, hold, and drag the slider to the far right.
- ❷ Ensure the ✓ is next to "Preview" so that when you click on a the photo, you'll see a thumbnail of it.
- ❸ Click on "OK" button.

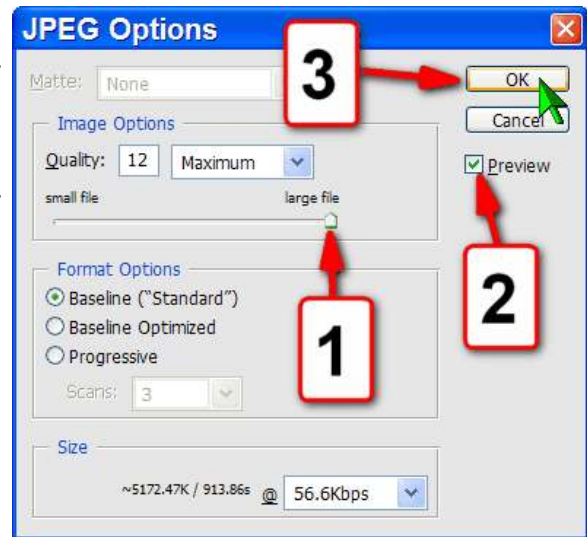


Figure 10