

Photoshop Elements 5

MAGIC EXTRACTOR

© Darry D Eggleston, 813.677.2871, DarryD@darryd.com
Click on any blue, underlined text to go to its linked reference.

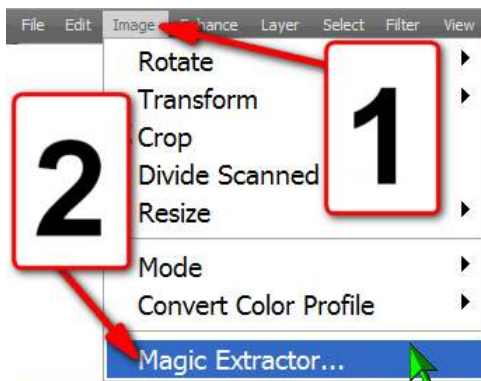


One of the most powerful new tools in Elements is the *Magic Extractor*. Here's how to use it.

1. Open a photo from which you wish to extract (remove) something for use in the same or a different photo. In **Figure 1**, I am using our royal cat, TinkerBelle.



Figure 1



2. From the MenuBar (**Figure 2**), select Image > Magic Extractor...

Figure 2

3. Mark what to include in the selection (**Figure 3**):

- 1 Select the first brush.
- 2 Left-click and release to create dots around that which you want to include.

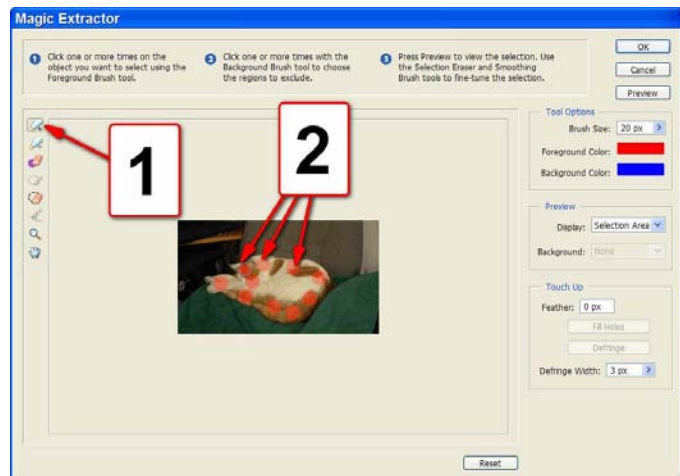


Figure 3

¹ Editors: Dick Evans & Parker Monroe. Permission for reproduction in whole or in part is granted to organizations for internal, non-profit use provided credit is given to the author along with the copyright notice: Article reprinted with permission. Copyright © 2007 Darry D Eggleston, <http://DarryD.com>.

35
36
37
38
39
40
41
42
43
44
45
46
47
48
49
50
51
52
53
54
55
56
57
58
59
60
61
62

4. Select what not to include (Figure 4):

- ① Left-click on the second brush.
- ② Left-click and release to create dots around that which you want to exclude.

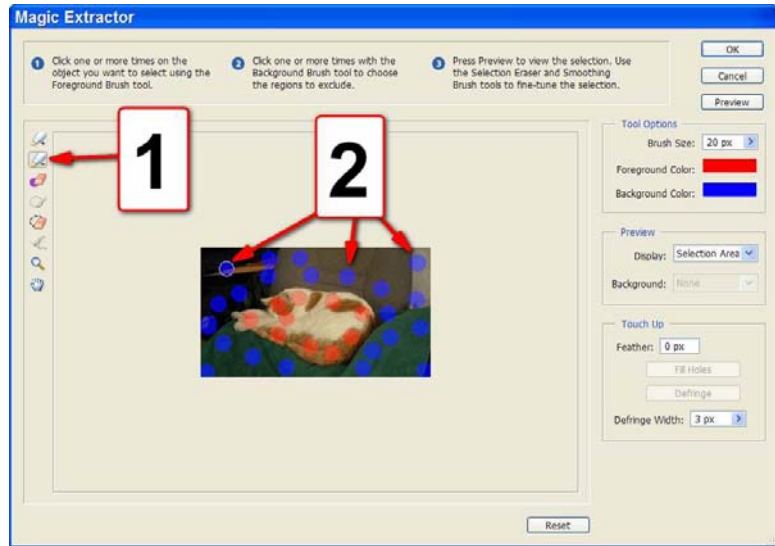


Figure 4

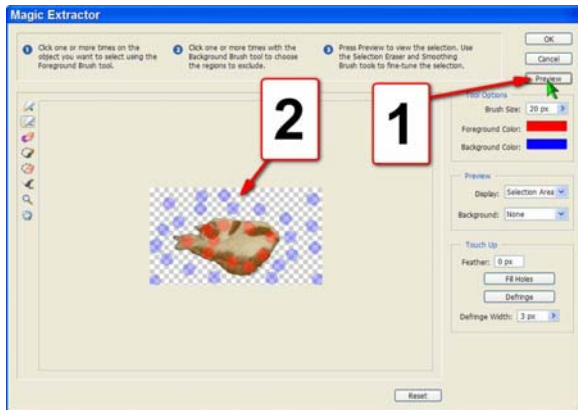


Figure 5

5. Preview your choices (Figure 5):
- ① Left-click on the “Preview” button.
 - ② A preview appears.

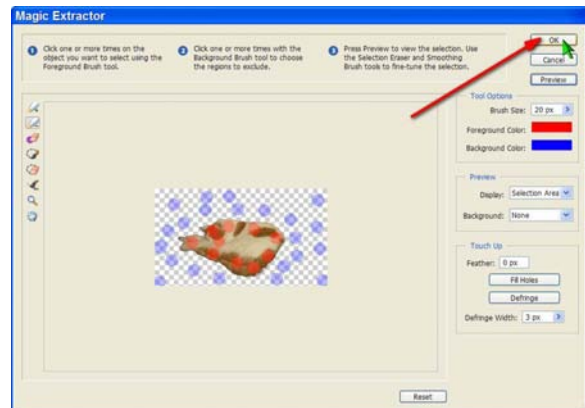


Figure 6

63
64 7. The resulting photo is devoid of all
65 items outside of that which you selected
66 to include (**Figure 7**).



Figure 7

67
68
69
70
71
72

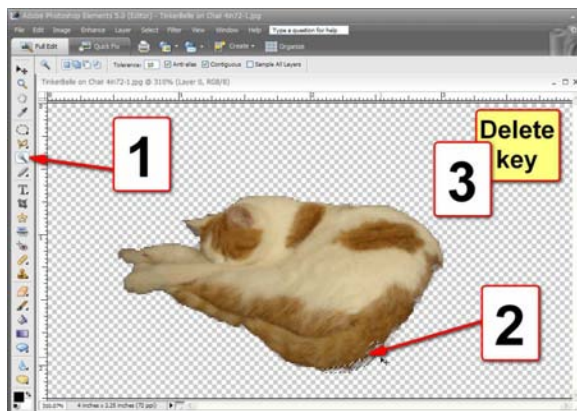


Figure 8

8. You may need the *Magic Wand* to clean up minor mistakes (**Figure 8**):

- ❶ Select the *Magic Wand*.
- ❷ Select areas. Left-click on the first selection. Use Shift+Click to select additional areas. Use Alt+Click to remove selections.
- ❸ Touch the “Delete” key on your keyboard.

73
74
75
76
77
78
79
80
81
82
83

86 9. Now use the Blur tool
87 (**Figure 9**):

- 88 ❶ Select the Blur tool.
- 89 ❷ Adjust the brush's settings
90 as needed.
- 91 ❸ Left-click, hold, and drag
92 around the selected item to
93 make it less obvious that it is
94 not part of the original photo.

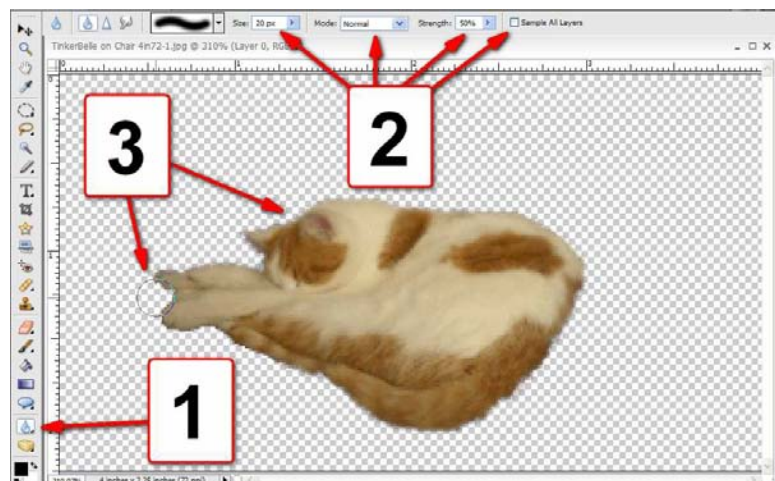


Figure 9

95
96 10. Insert a new photo as a
97 layer behind the extracted
98 image (**Figure 10**).



Figure 10