


# Photoshop Elements

## LOAD CUSTOM BRUSHES

© Darry D Eggleston, 813.677.2871, [DarryD@darryd.com](mailto:DarryD@darryd.com)



This is how to load Custom Brushes.

1. Open Photoshop Elements.
2. Click on the Brush tool (  ).
3. Select “Load Brushes” (**Figure 1**):
  - ❶ Click on the down arrow next to the brush preview.
  - ❷ Click on the circled arrow in the brushes drop-down menu.
  - ❸ Click on “Load Brushes”.

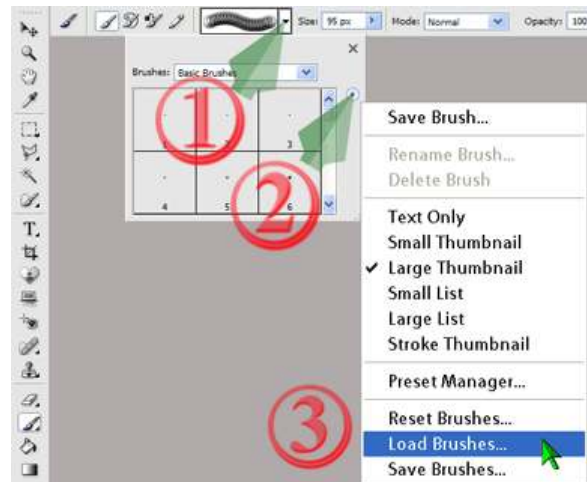


Figure 1

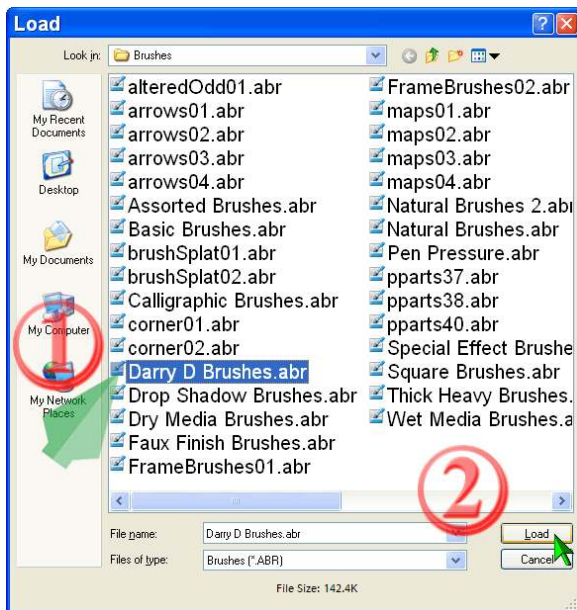


Figure 2

4. Select the Brush group (**Figure 2**):
  - ❶ Left-click on the group.
  - ❷ Left-click on the “Load” button.
5. Now when you select brushes and click on the down-arrow, you’ll see the brushes you selected (**Figure 3**).

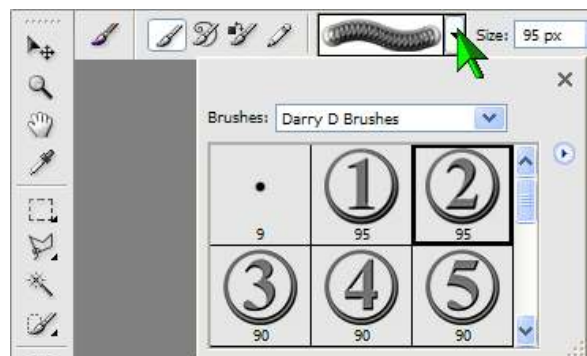


Figure 3