

Photoshop Elements 5.0 ORGANIZER PREFERENCES

© Darry D Eggleston, 2006, DarryD@darryd.com



In Elements 5.0, preferences for the Organizer are set separately from those for the Editor. Here's how to set them.

1. Open the Organizer and select Edit ► Preferences.
2. The Preferences window appears (**Figure 1**). Ensure that you check the items shown in the figure.

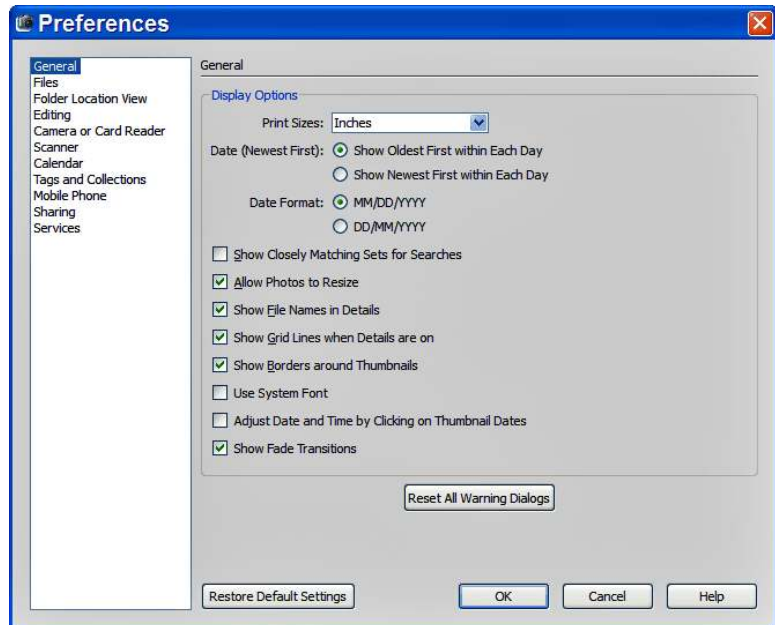


Figure 1

3. Click on “Files” in the left column (**Figure 2**).

You can change the locations of “Folders for Saved Files” (red arrow) to any folder you wish by clicking on the “Browse” button.

I use “C:\My Documents\My Pictures.”

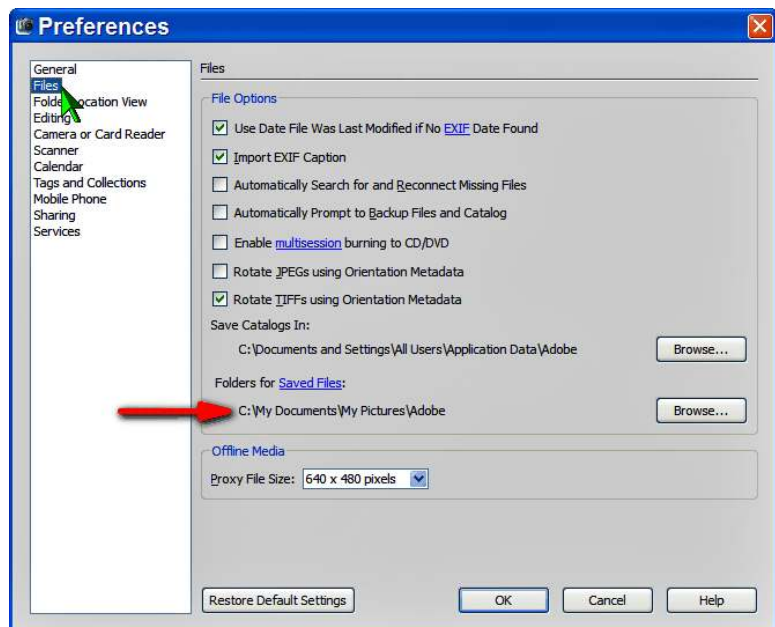


Figure 2

4. In “Folder Location View,” (Figure 3), this selection will sort all the files in the Organizer by folder .
(The figure’s window was reduced to save space.)

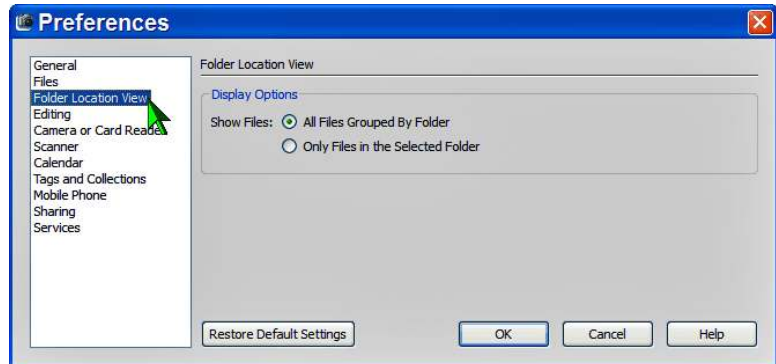


Figure 3

5. In the Editing pane, don’t make changes (Figure 4).
(The figure’s window was reduced to save space.)



Figure 4

6. In “Camera or Card Reader,” (Figure 5).

❶ Remove the ✓ from the “Automatically Fix Red Eyes” because it can adversely affect other things, such as teeth.

❷ Ensure the ✓ is next to “Auto Launch...” so it will recognize the camera when plugged in and turned on.

❸ Ensure you leave the “Delete Options” as shown.

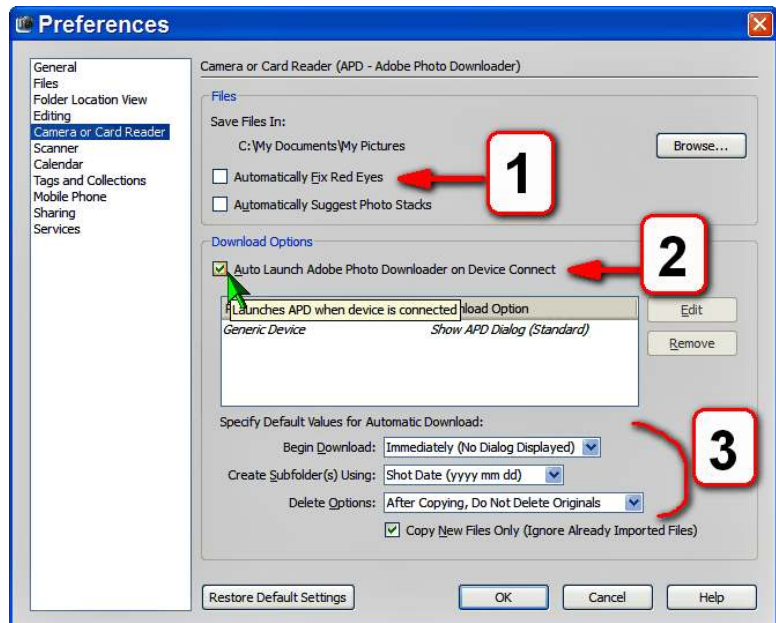


Figure 5

7. Set the “Scanner” settings (Figure 6).

❶ It will show any scanner that you connected to the PC and turned on.

❷ Set the Quality to maximum.

❸ Remove the “Automatically Fix Red Eyes.”

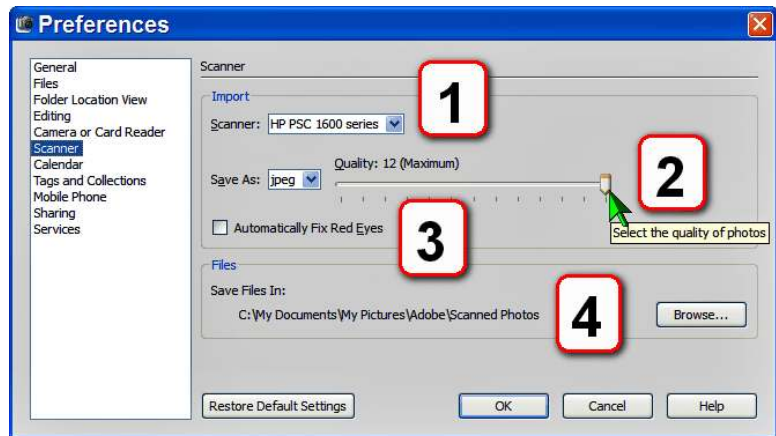


Figure 6

8. Set “Calendar” (Figure 7).

❶ You can change the calendar week start day to Monday.

❷ You can remove excess holidays (like *Cinco de Mayo*) if you’re not Hispanic.

❸ You can add birthdays, anniversaries, etc.

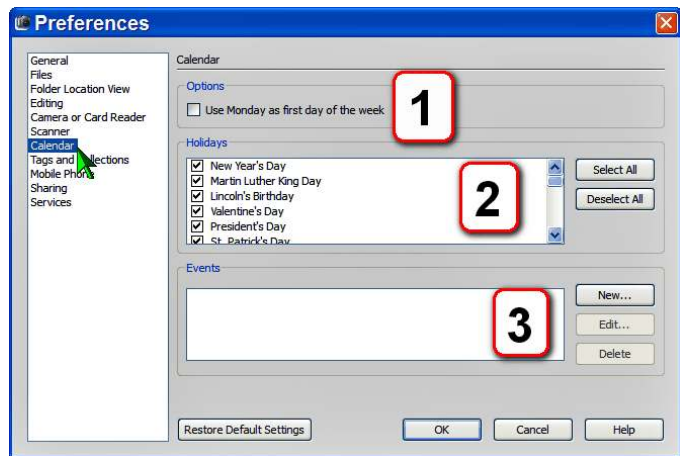


Figure 7

9. Set “Tags and Collections” (Figure 8).

❶ I don’t recommend any changes from the default settings.

❷ If you’re vision-impaired, you can select larger tag sizes.

❸ “Faster Searching” will usually result in satisfactory results.

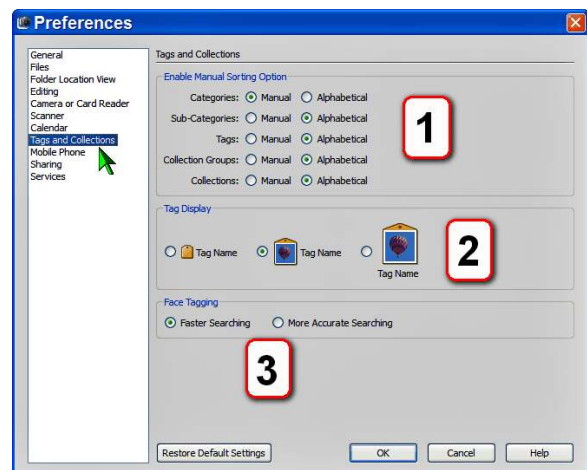


Figure 8

10. Set “Mobile Phone” if you plan on using Elements to upload photos from your mobile phone (**Figure 9**).



Figure 9

11. Set “Sharing” if you plan on sending photos *via* email from Elements (**Figure 10**).

❶ Select your email package.

❷ You can choose to have each email’s notations saved as captions.

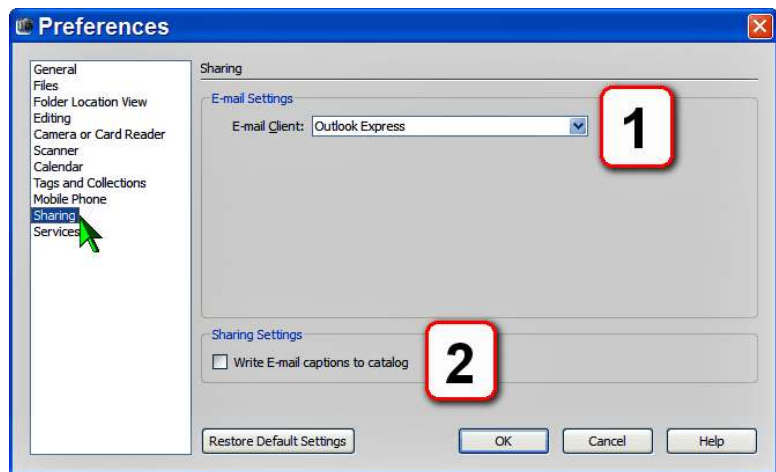


Figure 10

12. Under “Services” (**Figure 11**), I recommend you leave only one ✓ under “Automatically check for services.”

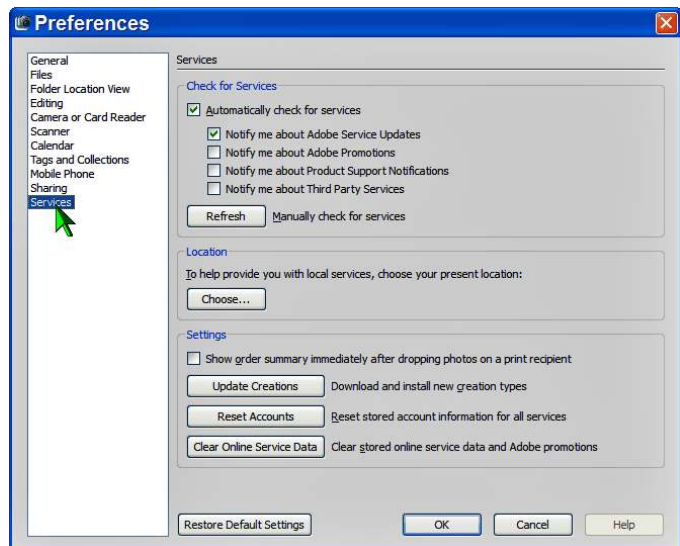


Figure 11