

Photoshop Elements E-MAIL FROM INSIDE PHOTOSHOP ELEMENTS

© Darry D Eggleston, 813.677.2871, DarryD@darryd.com



When I send a photo to someone, I prefer to do it from within Windows XP. See my lesson “Photos Sent *via* Email” in the Windows lesson at my website < <http://darryd.com> >.

However, on special occasions — such as birthdays, anniversaries, etc. — you can make the day for your friends and family by sending them fun-theme e-mails with photos right in the body of the message.

To do that, use Photoshop Elements (PSE) to embed photos in an e-mail. Your recipients open the e-mail message and view the images in a colorful layout. (There’s no need to open attachments.)

1. Select photo to share in the *Photo Browser* (**Figure 1**):

- ❶ Select photo to e-mail in the Photo Browser
- ❷ Left-click on the Share button in the shortcuts bar
- ❸ Choose E-mail from the pop-up menu.



Figure 1

NOTE: You can also send photos to cell phones and palm pilots.

2. Select Recipients (**Figure 2**):

- ❶ Left-click on email recipient.
- ❷ Left-click on “Include captions” to remove any captions you have attached to the photo.
- ❸ Write a message.
- ❹ Left-click on “Next” button.

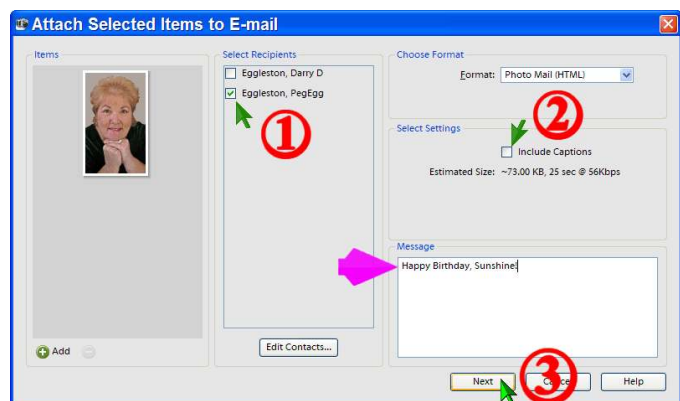


Figure 2

3. I select the frame that I want displayed around the photo (**Figure 3**).

4. Next I select the stationery I want displayed behind the photo (**Figure 4**).

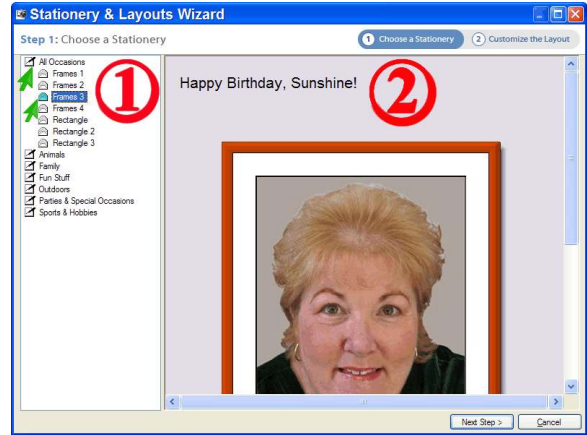


Figure 3

5.

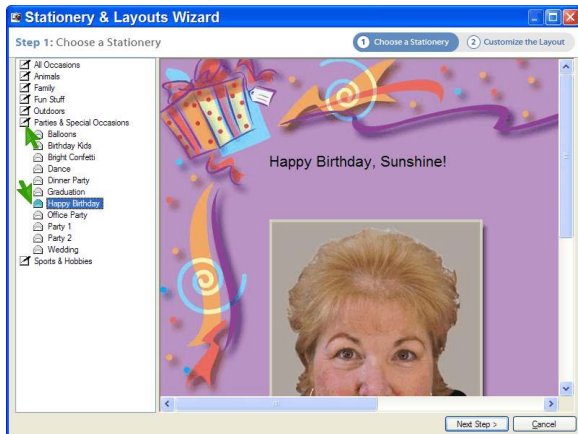


Figure 4