

Photoshop Elements 6
Lesson 4-4

UPLOAD PHOTOS TO PC



© Darry D Eggleston, 813.677.2871, DarryD@darryd.com
Click on any blue, underlined text to go to its linked reference.

Elements 6 makes it easier than ever to upload your photos from your camera to your personal computer. Here's how to do it.

1. If you have your Preferences in the Organizer set to automatically upload your photos, the Adobe Uploader will show this prompt the moment your digital camera is plugged into your PC and the camera is turned on (**Figure 1**).

If you don't know how to set the Organizer Preferences, select lesson 4-2 at <http://darryd.com/PSE6>.

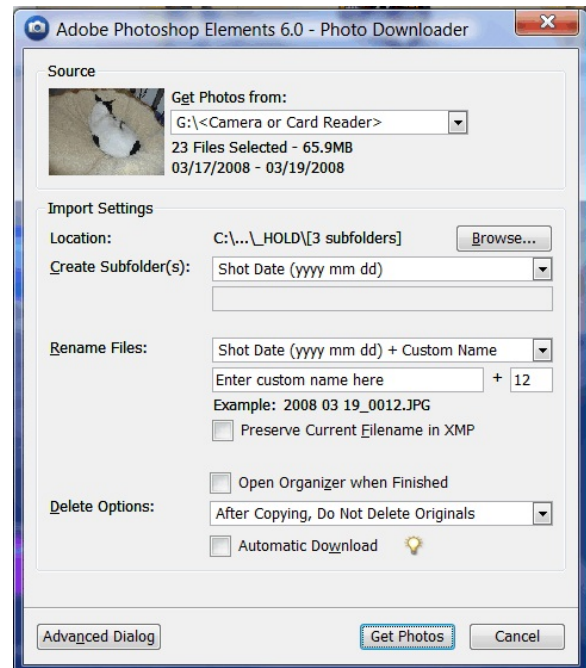


Figure 1

¹ Editors: Peggy S. Eggleston, Dick Evans & Parker Monroe. Permission for reproduction in whole or in part is granted to organizations for internal, non-profit use provided credit is given to the author along with the copyright notice: Article reprinted with permission. Copyright © 2008 Darry D Eggleston, <http://DarryD.com>.

2. Add a custom name (**Figure 2**):

- ❶ Add your name, where the photos were taken or whatever you want *on every photo's file name* during this upload.
- ❷ Ensure the counter is reset to 1.
- ❸ An example of how the photos will be numbered is shown.

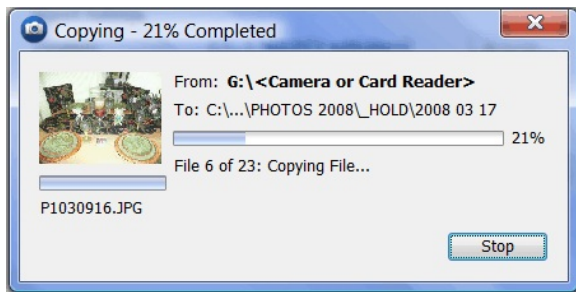


Figure 3

3. During uploading, you'll see a progress chart and a preview of the current photo be uploaded (**Figure 3**).

4. When Elements has finished the upload, a prompt appears (**Figure 4**). Left-click on the "OK" button. (If you don't want the Organizer to open, left-click to remove the ✓ next to Launch Organizer Now.

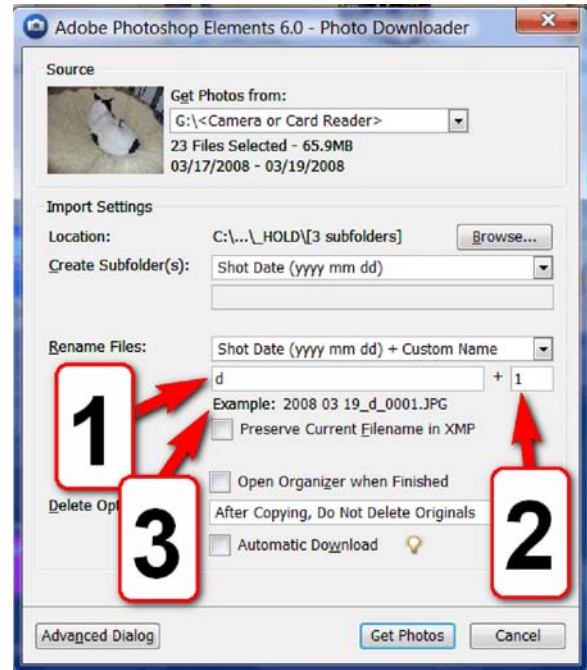


Figure 2



Figure 4

5. The Organizer opens
(**Figure 5**):

- ❶ You can left-click, hold, and drag on the slider to see more or fewer photos.
- ❷ I have “Folder Location” as the view preference.
- ❸ I have “Details” selected so that I’ll see the date and time the photo was taken, plus the photo’s name.
- ❹ All the folders containing photos are shown on the left so that I can more quickly view any folder’s contents.
- ❺ The current folder’s location is shown.
- ❻ The details of the photos are shown.

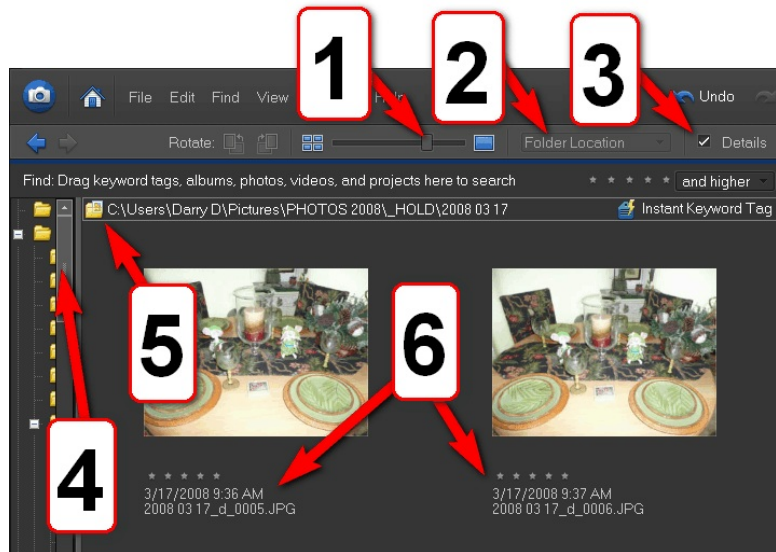


Figure 5