

# Photoshop Elements Organizer

## ADD PHOTOS

© Darry D Eggleston, 813.677.2871, [DarryD@darryd.com](mailto:DarryD@darryd.com)



Photoshop Elements makes it easy to eliminate red eye from photos. Here's how.

1. Open Adobe Photoshop Elements and Left-click on the “View & Organize Photos” option (**Figure 1**).

2. IF you have recently added the photos to your hard drive and they are NOT a part of the Album yet, you'll need to get them.

From the MenuBar, select File > Get Photos > From Files and Folders (**Figure 2**).



Figure 1

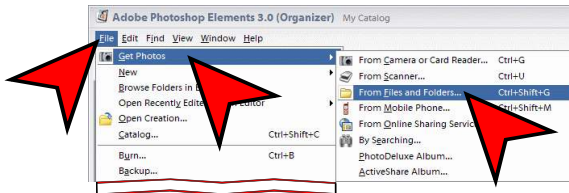


Figure 2

3. Click on the folder (**Figure 3**) and then click on the “Get Photos” button.

Ensure you have clicked to place a check in “Get Photos from Subfolders.”

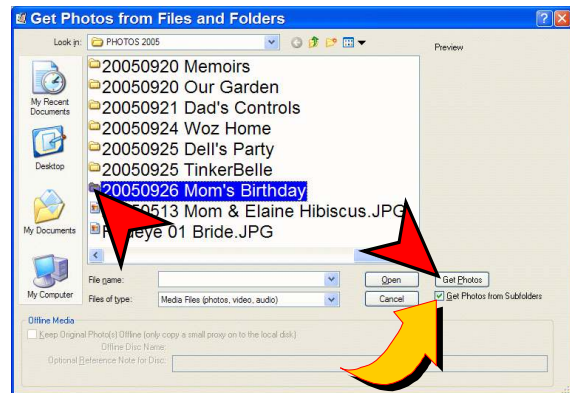


Figure 3

4. The photos are inserted into an album (Figure 4).

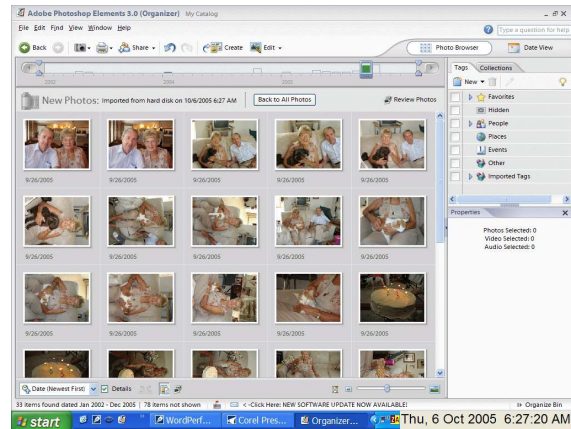


Figure 4

5. IF you want a closer look, left-click, hold, and drag the sliding scale at the lower-right of the screen (Figure 5).

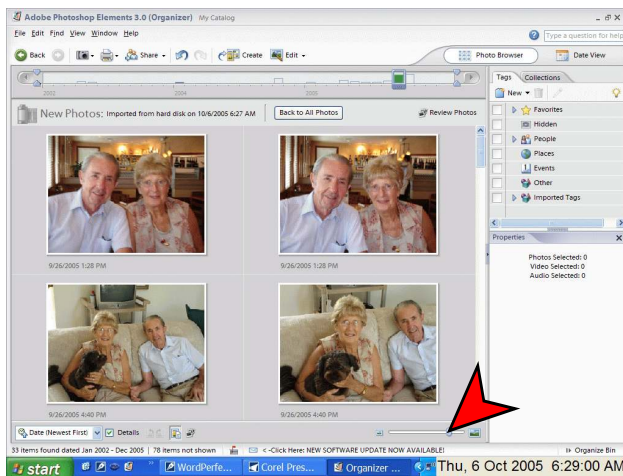


Figure 5

6. If you want to edit a specific photo, ① Left-click on that photo and then ② Left-click on the Edit button (Figure 6).

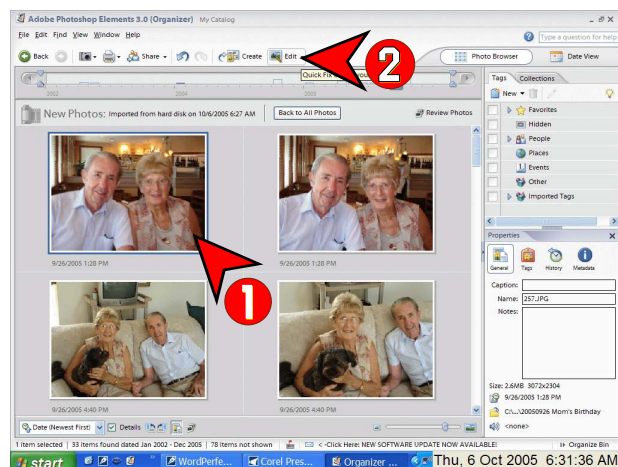


Figure 6