



PHOTOMERGE FACES

© Parker Monroe & Darry D Eggleston

Click on any blue, underlined text to go to its linked reference.¹



You might use this Guided Fix when you would like to retain, say, a certain body's pose in a *Final photo*, but would prefer to use a better image of that person's face from another *Source photo* to replace his/her face, or someone else's face in the Final photo. This tool also allows one to use faces from multiple Source photos, and copy them to the same Final photo. One can even copy just certain facial features and add them to a face in the Final photo.

1. START.

1-1. In the **Organizer**, select photos to be used. Left-click on the first photo. Hold down the Ctrl key and left-click on the other photos (**Figure 1**).



Figure 1

NOTE: If the photos are not in the Organizer, you'll have to get them. To get photos, from the MenuBar, select File ► Get Photos and Videos ► From Files & Photos and navigate to the folder containing the photos you wish to use. Select the photos to use, and click Open.

1-2. Go to Full Edit by Left-clicking on Editor ► Full Edit (**Figure 2**).

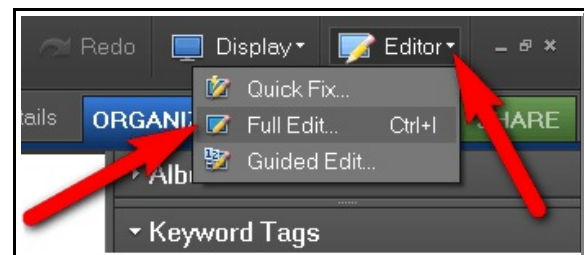


Figure 2

¹ Editors: Peggy S. Eggleston, Dick Evans & Darry D Eggleston. Permission for reproduction in whole or in part is granted to individuals and to organizations for internal, non-profit use provided credit is given to the author along with the copyright notice: Article reprinted with permission. Copyright © 2008 Parker Monroe and Darry D Eggleston.

1-3. Open the Project Bin at the bottom of the Editor window (**Figure 3**).

2. COPY A FACE FROM ONE PHOTO TO ANOTHER.



Figure 3

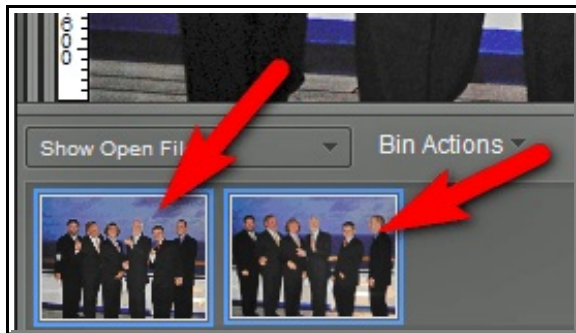


Figure 4

2-1. In the Project Bin, Ctrl + Left click on each of the photos you wish to use. Two to ten photos can be selected. (**Figure 4**)

2-2. Choose File ► New ► Photomerge Faces, or click on Guided Edit, and select Photomerge Faces.

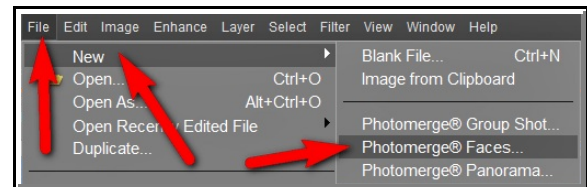


Figure 5



Figure 6

2-3. Pick a photo as your *Base Image* and Left-click, hold, and drag it from the Project Bin to the Final box, on the right (**Figure 6**). **NOTE:** Don't worry if the photo being dragged is already in the Source box.

2-4. Left-click on another image in the Project Bin that contains a face you wish to copy. The Left-click will place that image in the Source box, on the bottom left. Notice the colored borders (**Figure 7**).



Figure 7

Pick a face photo in the Project Bin that would make a good base image. Drag it to the Final window on the right. Click another face photo in the bin and click the Alignment tool to place 3 markers in the Source window and 3 markers in the Final window. Drag the markers on the eyes and mouth on each face. Click Align Photos.

Alignment Tool

Align Photos

Figure 8

2-5. Left-click on the Alignment tool on the right-side of the screen (**Figure 8**).

2-6. Place the three alignment markers on the eyes and mouth of the person in the Source image (**Figure 9**).

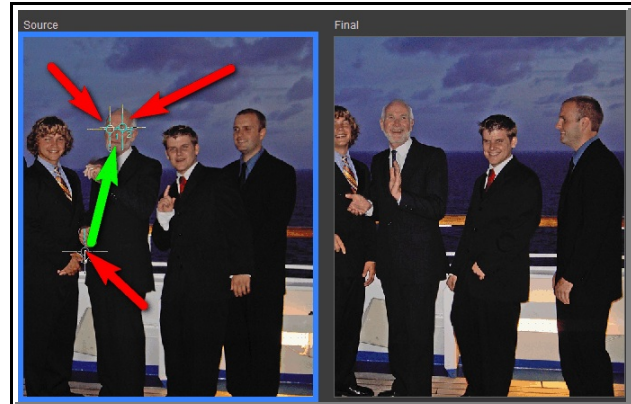


Figure 9



Figure 10

2-7. Place the three alignment markers on the eyes and mouth of the person in the Final image (**Figure 10**).

2-8. Left-click on Align Photos (**Figure 11**).
NOTE: If you forget to click on the Align Photos button, the Source image will eventually appear in the Final image, but it will not be placed correctly.



Figure 11

2-9. The result (**Figure 12**) may cause the Source photo to skew somewhat, but don't worry about it.



Figure 12

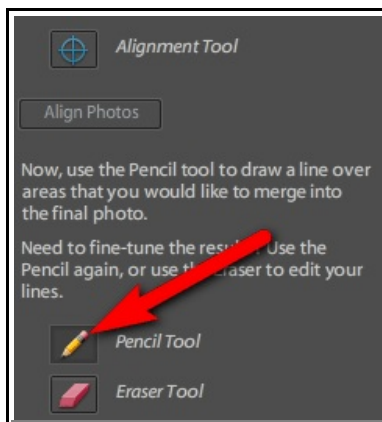


Figure 13

2-10. Left-click on the Pencil tool (**Figure 13**).

2-11. Left-click, hold, and drag to draw a line or lines over the facial area in the *Source* that you want to merge into the *Final* photo (**Figure 14**). Draw a large enough area to encompass the full head if it's the head you want to copy.



Figure 14

2-12. When you release your mouse button, this facial area will shortly appear in the Final photo (**Figure 15**).

2-13. Below is the original photo (**Figure 16**) with the Final photo (**Figure 17**) under it.

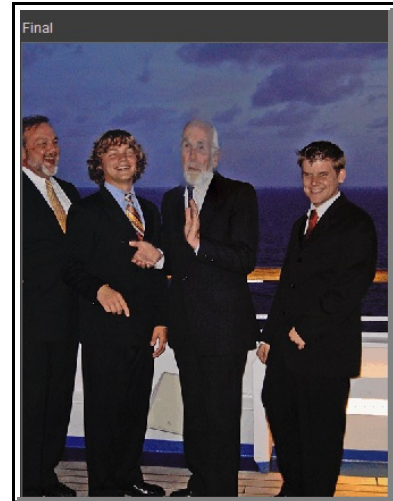


Figure 15



Figure 16 — Original



Figure 17 — Photomerge Final

NOTES:

1. Fine Tune. To fine-tune what gets placed in the Final image, click again on the Pencil tool, and click and hold again on the Source photo to add additional content, or click on the Eraser tool, then click and hold over the Source photo to remove content.
2. You will have the temptation to use the Zoom tool to get a better view when doing this procedure, but the automatic placement of the mouth and eyes “movers” is based upon the full-size photo and will not be seen if you use Zoom.