



CREATE PARAGRAPH TEXT

© Darry D Eggleston, 813.677.2871, DarryD@darryd.com

Click on any blue, underlined text to go to its linked reference.

Here is a way to have text automatically wrap inside a text box.

1. Open a photo and create a New Layer (**Figure 1**).

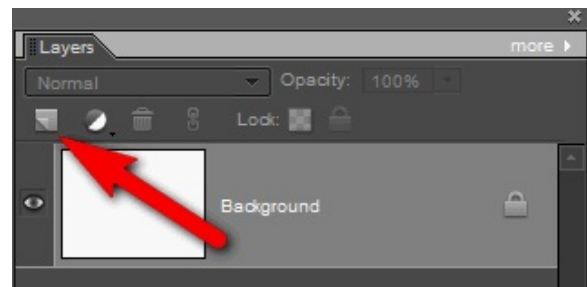



Figure 1



Figure 2

2. Use the Rectangular Marquee tool  to create a selection (**Figure 2**).

¹ Editors: Peggy S. Eggleston, Dick Evans & Parker Monroe. Permission for reproduction in whole or in part is granted to organizations for internal, non-profit use provided credit is given to the author along with the copyright notice: Article reprinted with permission. Copyright © 2008 Darry D Eggleston, <http://DarryD.com>.

3. Fill Selection (**Figure 3**):

- ❶ Select Paint Bucket.
- ❷ Change the Foreground color to white.
- ❸ Change the Opacity to 35%.
- ❹ Left-click on the selection to fill it.

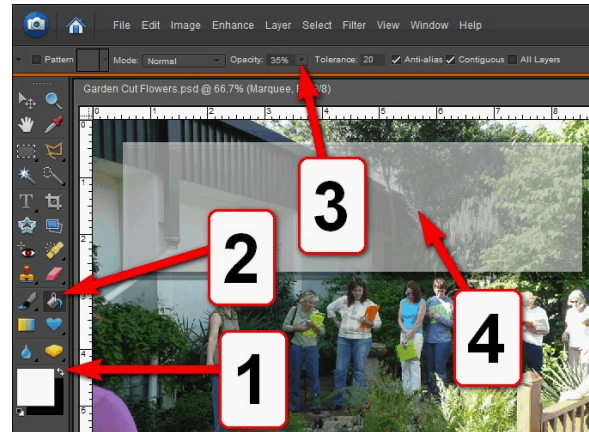


Figure 3

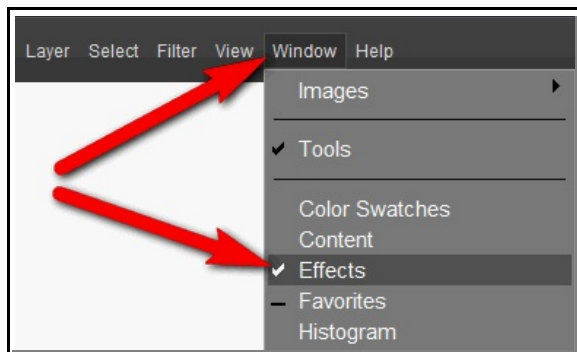


Figure 4

4. Open the Effects palette by choosing Window ► Effects (**Figure 4**).

5. Left-click on one of the options. I have chosen "Neon" (**Figure 5**).



Figure 5

6. SAVE your work (**Figure 6**):

- ❶ Ensure you are saving into the desired folder.
- ❷ Type a name for the work.
- ❸ Ensure you're saving as a Photoshop Document (PSD).
- ❹ Decide if you want the graphic to appear in your Organizer. (In this case, I have decided not to include it.)
- ❺ SAVE your work by clicking on the "SAVE" button.

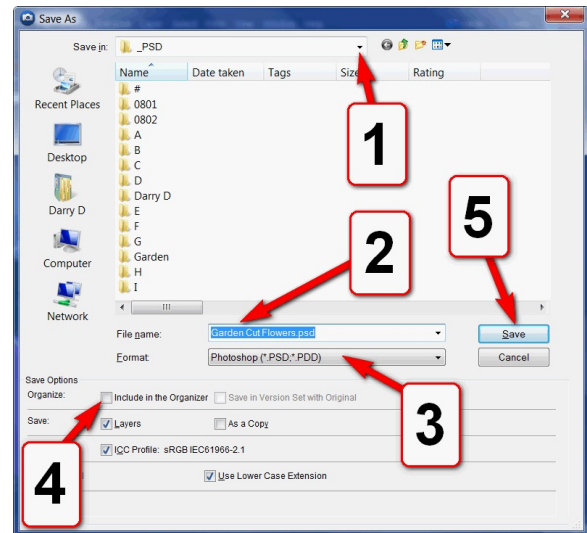


Figure 6

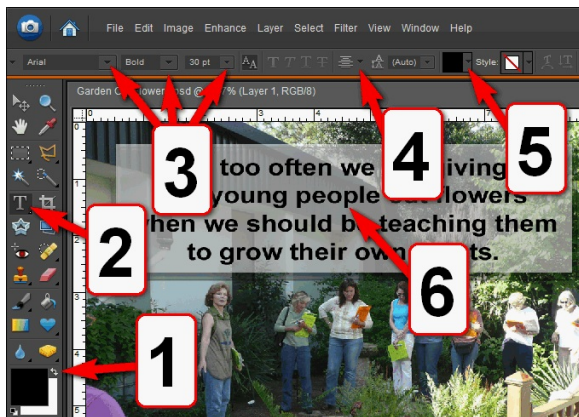


Figure 7

7. Use the Text tool to enter your text (**Figure 7**):

- ❶ Change Foreground color to Black.
- ❷ Click on Text tool.
- ❸ Select your Font, Appearance and Size.
- ❹ Select Justification. (I'm using Center.)
- ❺ Select Font Color.
- ❻ Type the text.

8. SAVE your work by selecting File > Save from the MenuBar.

9. IF you want to share the work, flatten the layers and save it as a Joint Photographic Experts Group (JPEG/JPG).