

# Photoshop Elements

## 6-8 CURVED TEXT

© Darry D Eggleston, [DarryD@darryd.com](mailto:DarryD@darryd.com)

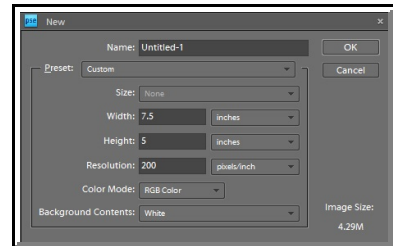
Click on the blue, underlined text to go to its linked reference.<sup>1</sup>



Anyone can create straight-line text in Photoshop Elements; but, some times, there's a need to create curved text. Here's how to do it.

1. If you've not working in an existing file, create a new one by selecting File ► New Document from the MenuBar.

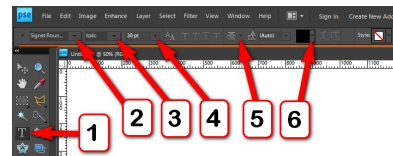
2. I recommend setting the size to 7.5" (width) by 5" (height) at 200 ppi (**Figure 1**). That's the working area if you fold a standard, 8.5" x 11" card stock in half and set your margins to 0.5" all the way around.



**Figure 1**

3. Set the Text (**Figure 2**):

- ❶ Select the Text tool.
- ❷ Select the Font Face.
- ❸ Select the Appearance.
- ❹ Select the Font Size.
- ❺ Select the Justification.
- ❻ Select the font's Color.



**Figure 2**

4. If you don't have a favorite font, I recommend "Signet Roundhand" for fancy fonts although "Signature" font is more frequently chosen by others (**Figure 3**).



**Figure 3**

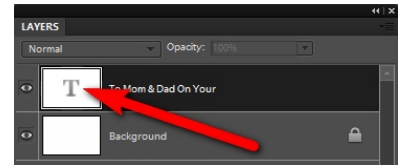
5. Type the text (**Figure 4**).



**Figure 4**

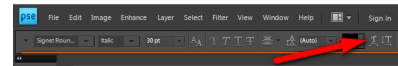
<sup>1</sup> Permission for reproduction in whole or in part is granted to groups and organizations for internal, non-profit use provided credit is given to the author along with the copyright notice: Article reprinted with permission. Copyright © 2010 Darry D Eggleston, <http://DarryD.com>. Editors: PegEgg Eggleston & Parker Monroe.

6. Select the text (**Figure 5**).



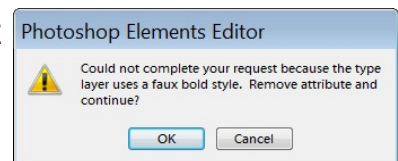
**Figure 5**

7. Click on the Curved Text icon (**Figure 6**).



**Figure 6**

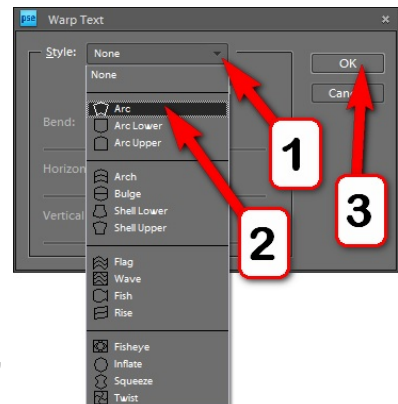
8. If the font and styles you've selected are not capable of being curved, you'll see a popup warning (**Figure 7**). Just left-click on "OK" button.



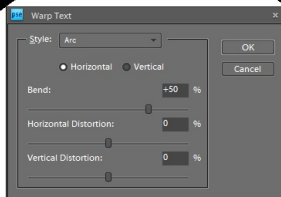
**Figure 7**

9. Select the Warp Text you want (**Figure 8**):

- 1 Click on the drop-down arrow next to Style.
- 2 Select the Style.
- 3 Click on "OK" button.



**Figure 8**



**Figure 9**

10. Set the "Arc" Bend and Distortion and click on "OK" button (**Figure 9**).

11. The "Arc Lower" is set the same way (**Figure 10**).



**Figure 10**