

Adobe Photoshop Elements TEXT BASICS

© Darry D Eggleston, 813.677.2871, DarryD@darryd.com

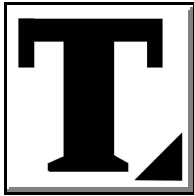


Figure 1

1. The Text tool (Figure 1) is the 9th tool — from the top — in the Tools palette, on the left-side of the Adobe Photoshop Elements screen.

2. In **Figure 2**, when you click on the Text tool (Red arrow), an entire line of options appears (green arrow).

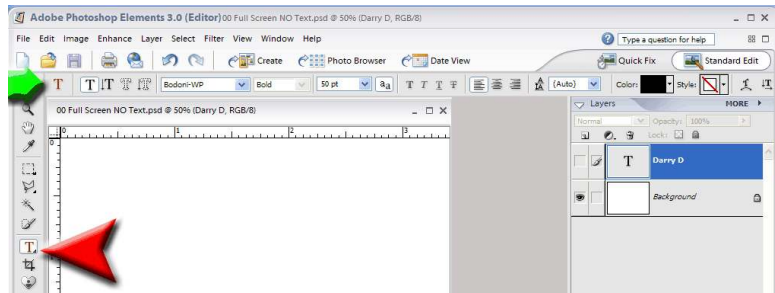


Figure 2

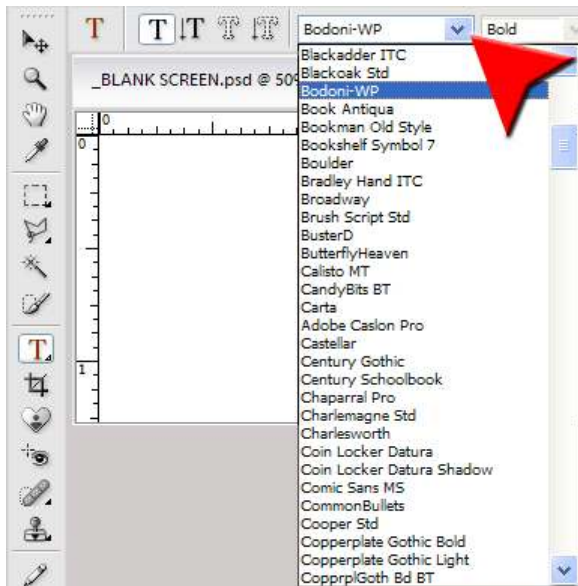


Figure 3

3. Once the Text tool is selected, you can select any available text styles by clicking on the down-arrow next to the current font style (**Figure 3**).

4. Likewise, you can select the font's size by clicking on the down arrow next to the font size (**Figure 4**).

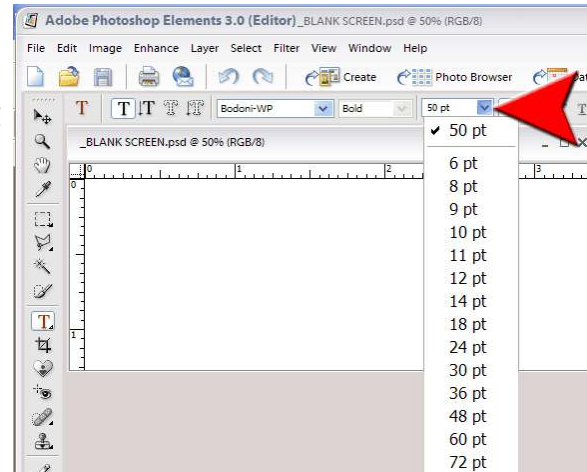


Figure 4

5. In **Figure 5**, one can see some of the modifications one can make to a given font:

- ① Bod, italic, underline, and strike-through.
- ② Justifications: left, center, right.
- ③ Height between lines when there is more than one line of text.
- ④ Color of the text.
- ⑤ The style of the font. The default is “no style” characterized by the red line through the white box. The numbers (for the steps in Figure 5) use a style called “Simple Emboss.” It was accessed by clicking on the down arrow in the Style box.
- ⑥ Above the six are two advanced options:
 - A. Create warped text
 - B. Change the orientation from horizontal to vertical.

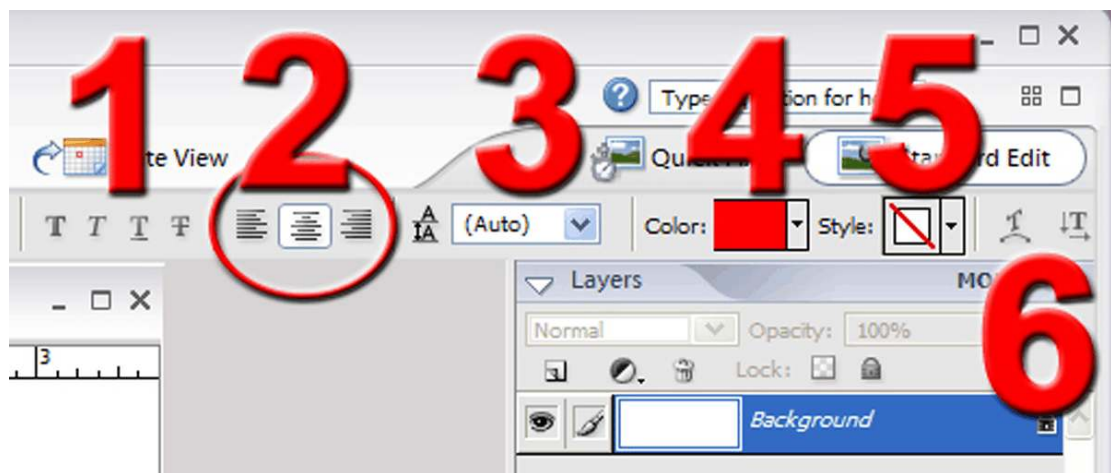


Figure 5