



SCAN MULTIPLE PHOTOS

© Darry D Eggleston, 813.677.2871, DarryD@darryd.com

Click on any blue, underlined text to go to its linked reference.

Elements allows you to scan multiple photos at one time. Here's how.

1. Select your scanner (**Figure 1**).
Given a choice between WIA and TWAIN, select TWAIN. It is an industry standard for image capturing software that controls importing digital images from a scanner or digital camera into the computer.

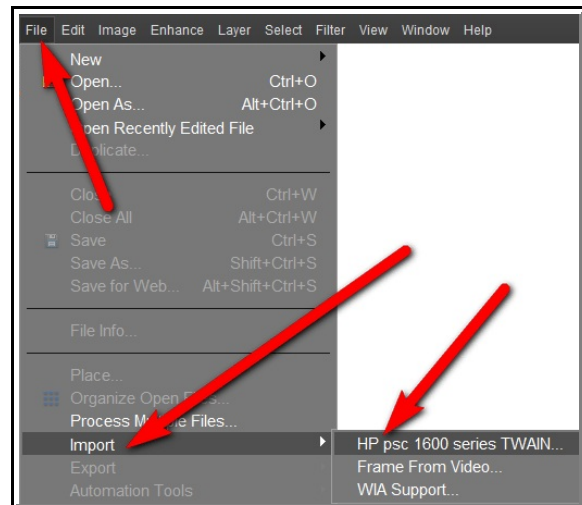


Figure 1

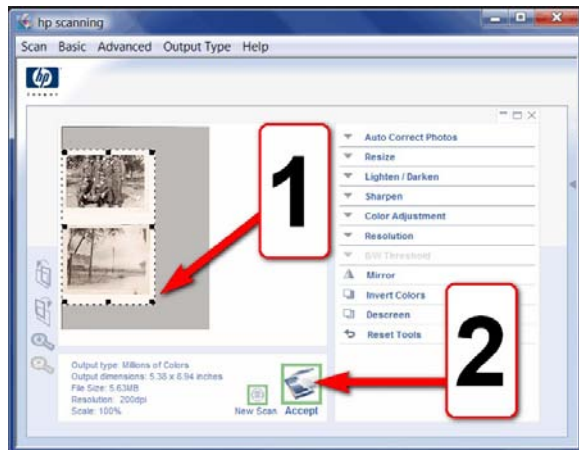


Figure 2

2. Select the size of the scanning window (**Figure 2**).

NOTE: There *must be* separation between the photos when scanned. (Your scanner's window may look different from mine.)

¹ Editors: Peggy S. Eggleston, Dick Evans & Parker Monroe. Permission for reproduction in whole or in part is granted to individuals and organizations for internal, non-profit use provided credit is given to the author along with the copyright notice: Article reprinted with permission. Copyright © 2008 Darry D Eggleston, <http://DarryD.com>.

3. After scanning in the photos, they will appear in Elements as one photo. (**Figure 3**).

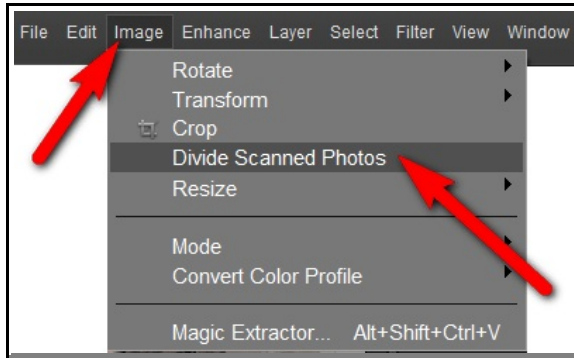


Figure 4

4. From the MenuBar, select Image ➤ Divide Scanned Photos (**Figure 4**).



Figure 3

5. The result is three photos (in this case): the original plus one of each of the separated photos (**Figure 5**). The number of resulting photos is based upon how many photos you scan.



Figure 5