

# Adobe Photoshop Elements 3 RED EYE REMOVAL

Darry D Eggleston, [DarryD@earthlink.net](mailto:DarryD@earthlink.net)  
813-677-2871 — <http://home.earthlink.net/~darryd>



Adobe Photoshop Elements makes it easy to eliminate red eye from photos. Here's how.

1. Open Adobe Photoshop Elements and Left-click on the “View & Organize Photos” option (**Figure 1**).



Figure 1

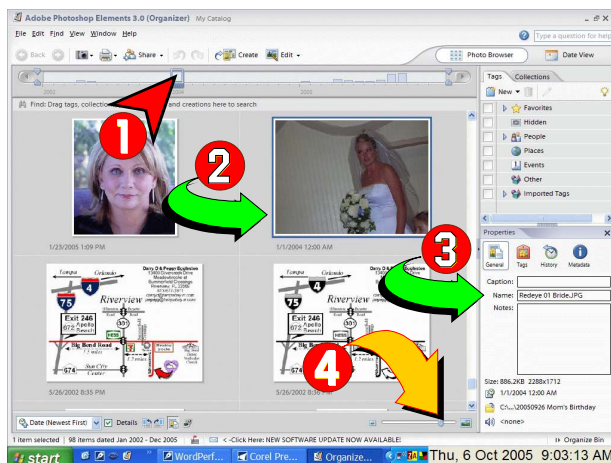


Figure 2

2. The albums appear (**Figure 2**).

- 1 Click on the spot on the time line where the album is located.
- 2 All the photos appear, in this case, with four showing.
- 3 The properties of the selected photo appear on the lower-right.
- 4 If you want more or less photos showing, Left-click, hold, and drag on the sliding tool at the bottom, right of the screen.

3. To fix the redeye of the bride, I select Edit > Go to Standard Edit (Figure 3).

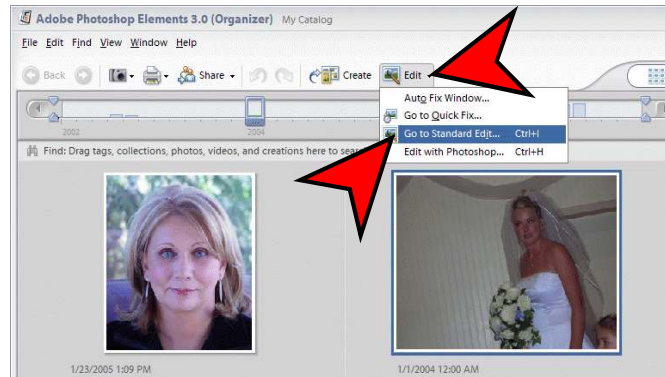


Figure 3

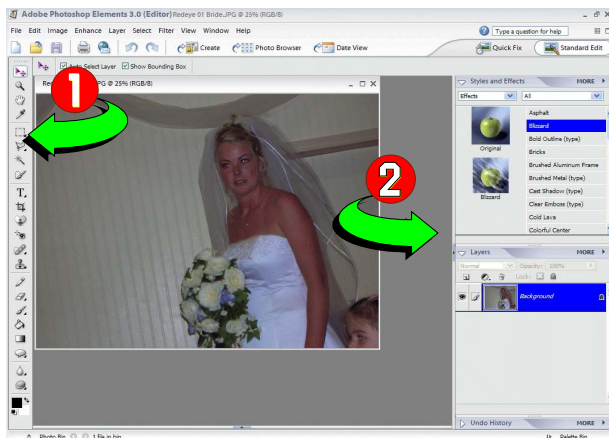


Figure 4

4. The Standard Edit window appears (Figure 4):

- ❶ The toolbox is on the left.
- ❷ The palettes are on the right.

5. Now I need to zoom in on the area to be edited (Figure 5):

- ❶ Select Zoom tool (either Left-click on the tool or touch the "Z" key, on the keyboard).
- ❷ Left-click, hold, and drag
- ❸ Releasing when a dotted box surrounds the area to be edited.

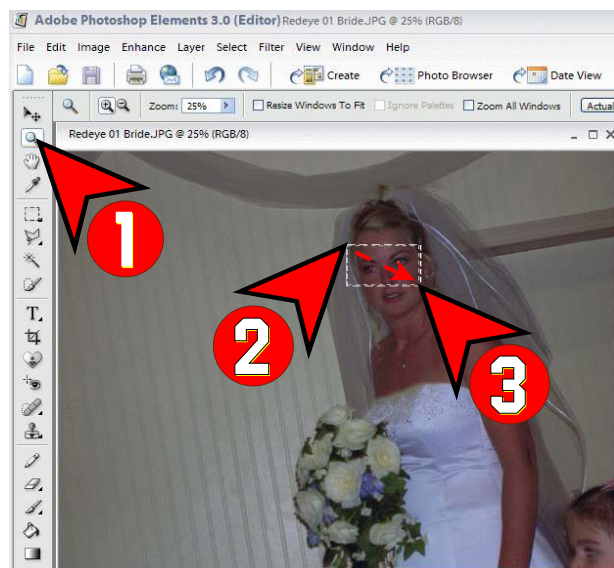


Figure 5

## 6. Remove the red eye.

- ❶ Select the Red Eye Removal Tool by Left-click on the tool or touching the “Y” key, on the keyboard.
- ❷ Left-click on the pupil and release.

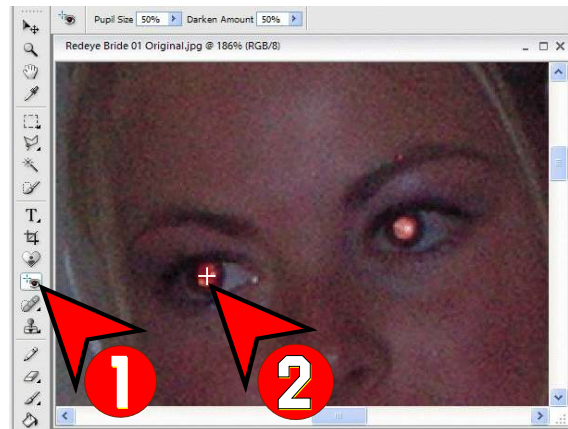


Figure 6

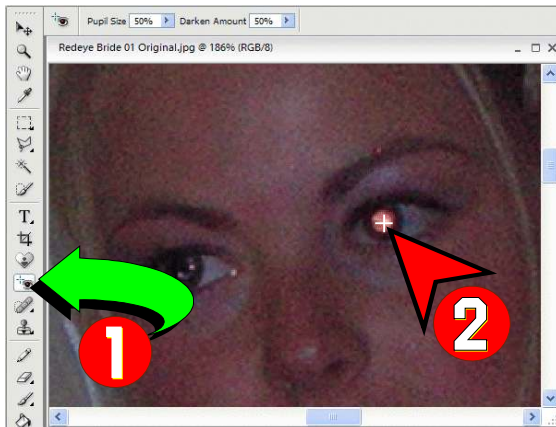


Figure 7

## 7. Fix the red eye in the other eye:

- ❶ You do not need to select the Red Eye Removal Tool since it is still selected.
- ❷ Left-click on the pupil and release.

8. The result is that the red eye is gone; but, notice that her left eye has a glare in it. (This is not that uncommon so we'll have to fix it.)

IF the repaired eyes do not have this glare, go to Step 14.

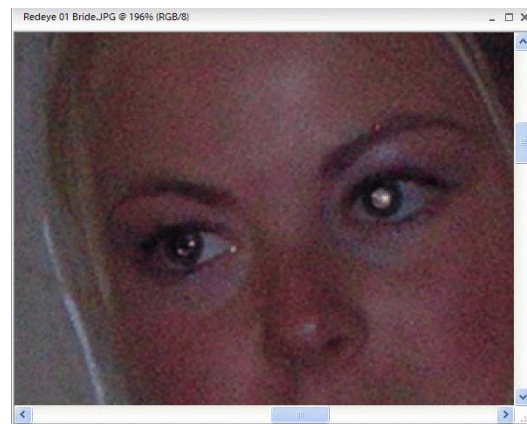


Figure 9



9. We'll need to select the "Clone Stamp Tool" (**Figure 9**):

❶ Left-click on the Clone Stamp Tool

❷ Place the cursor on the pupil that does not have the glare, but do not click. You will see a circle.

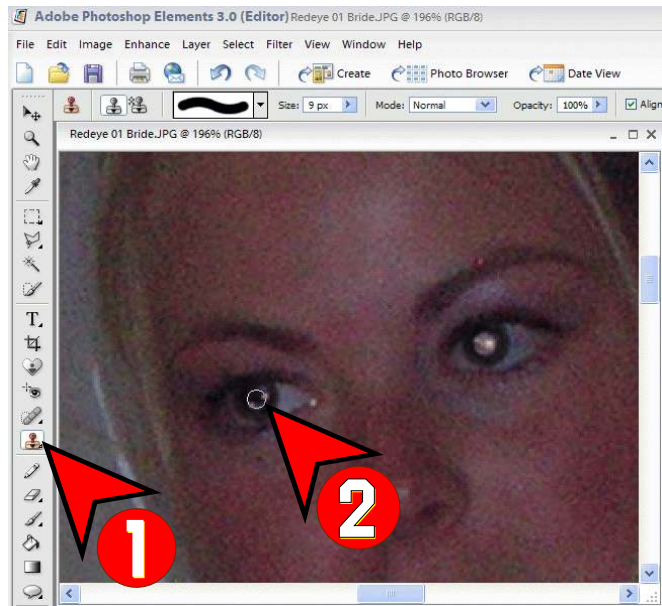


Figure 9

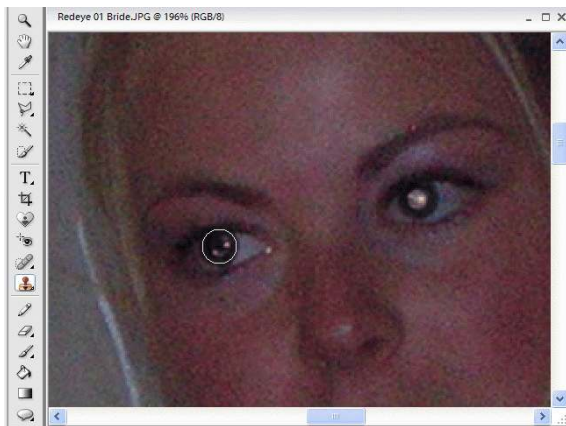


Figure 10

10. Enlarge the circle by touching the "]" key, on the keyboard (**Figure 10**).

(You can decrease the size by touching the "[" key, on the keyboard.)

Make the circle the size of the pupil, in her left eye, that you want to replace.

11. Hold the "Alt" key, on the keyboard, and Left-click on the eye (**Figure 11**). A crosshair appears briefly.

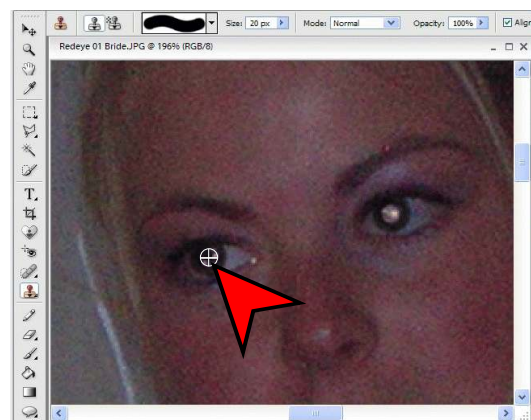


Figure 11

12. Left-click on the center of the left eye (**Figure 12**).

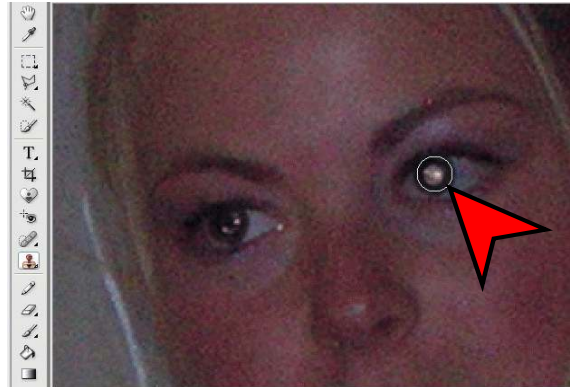


Figure 12



Figure 13

13. The eye is fixed (**Figure 13**).

14. The resulting photo conceals the work done (**Figure 14**).

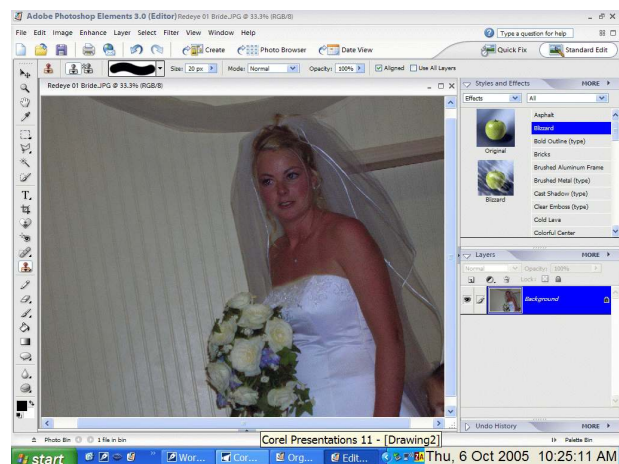


Figure 14