

# EDITOR PREFERENCES

© Darry D Eggleston, 813.677.2871, [DarryD@darryd.com](mailto:DarryD@darryd.com)

Click on any blue, underlined text to go to its linked reference.



After one loads Photoshop Elements 6 onto the PC, it's important to set the preferences for the program. However, preferences must be set separately for the Editor and for the Organizer.

Here's how to do it in the Editor.

1. After you open Photoshop Elements, select the Editor.

Within the Editor, from the Menu-Bar, select Edit > Preferences > General (Figure 1).

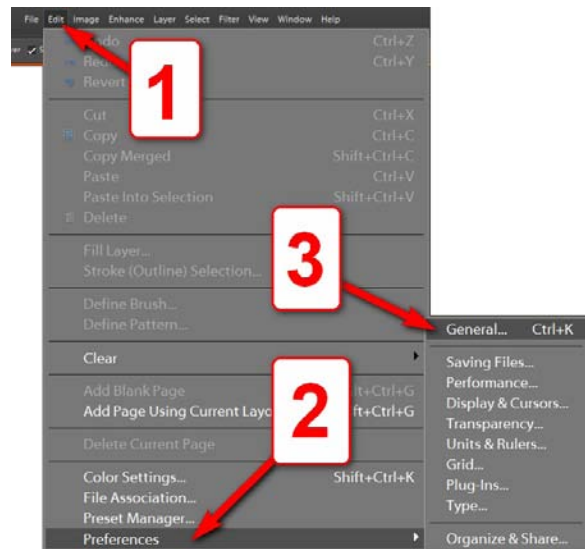


Figure 1

<sup>1</sup> Editors: Peggy S. Eggleston, Dick Evans & Parker Monroe. Permission for reproduction in whole or in part is granted to organizations for internal, non-profit use provided credit is given to the author along with the copyright notice: Article reprinted with permission. Copyright © 2008 Darry D Eggleston, <http://DarryD.com>.

2. **General.** In the General tab (**Figure 2**), make the changes shown.

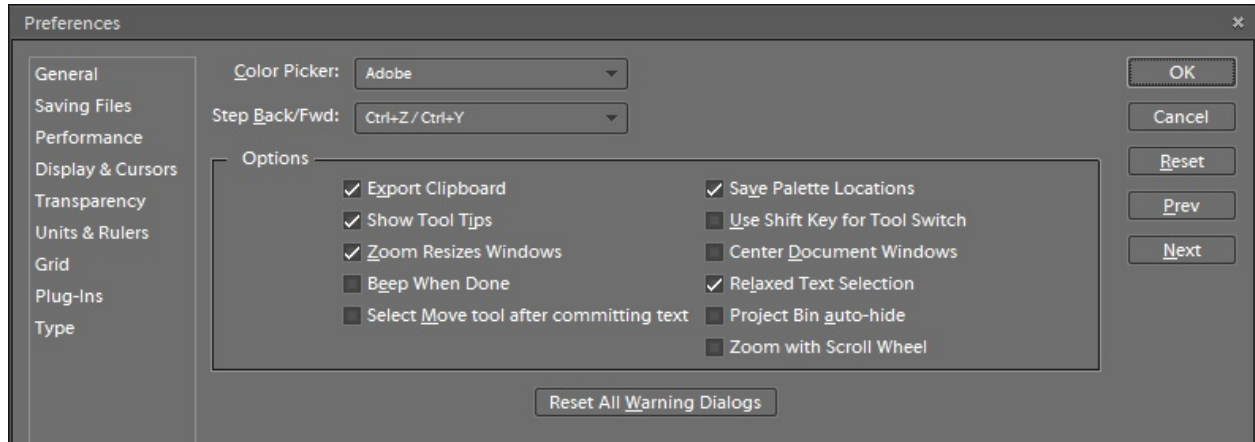


Figure 2

3. **Saving Files (Figure 3).** When the Saving Files options are selected (on the left-side of the window), these appear. (*The window is curtailed to show only the pertinent parts.*)

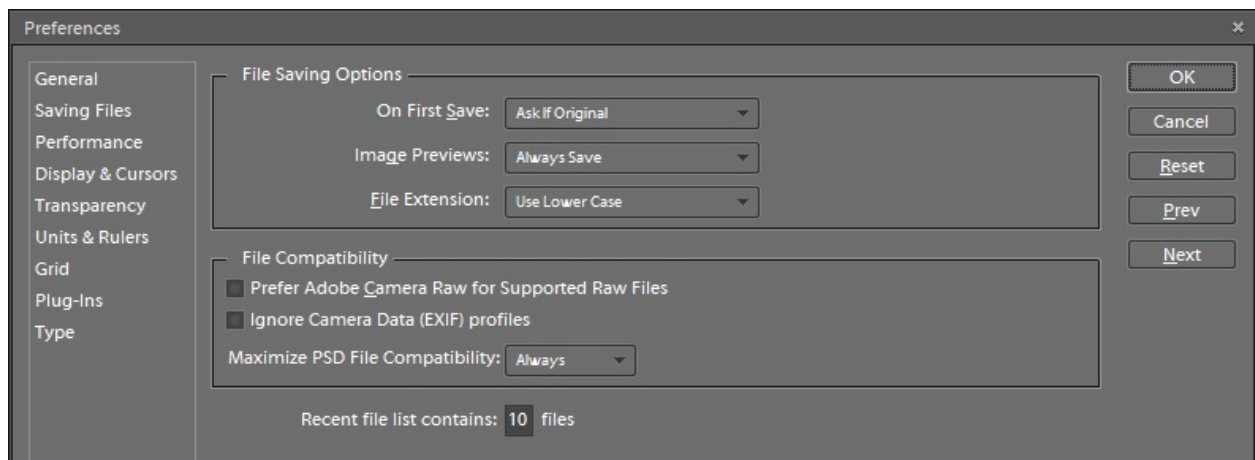


Figure 3

4. **Performance (Figure 4).** When satisfied with “Saving Files” settings, click on the Performance tab. These options appear.

❶ The key choice is how much RAM you want to permit Elements to access. In this, I have allocated 500 Mb which was more than Elements recommended. However, the more you can allocate, the faster and more efficient Elements will run.

❷ You can also increase Elements’ efficiency by lowering the number of History States (number of past choices which you can un-do) from 26 (the default) to a smaller number such as 20 which I have chosen.

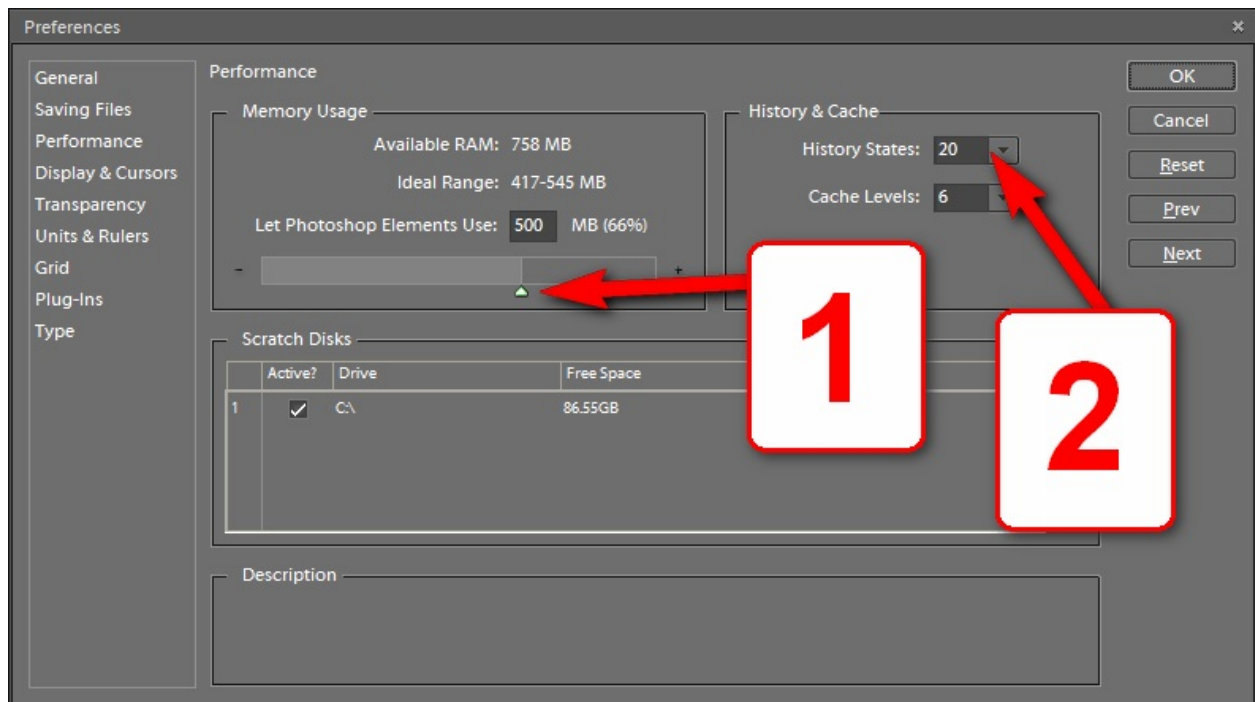


Figure 4

5. **Display and Cursors (Figure 5).** Here new choices appear. It is here that you can change the color of the background (called the Shield) and its opacity. I do *not* recommend making any changes in this window.

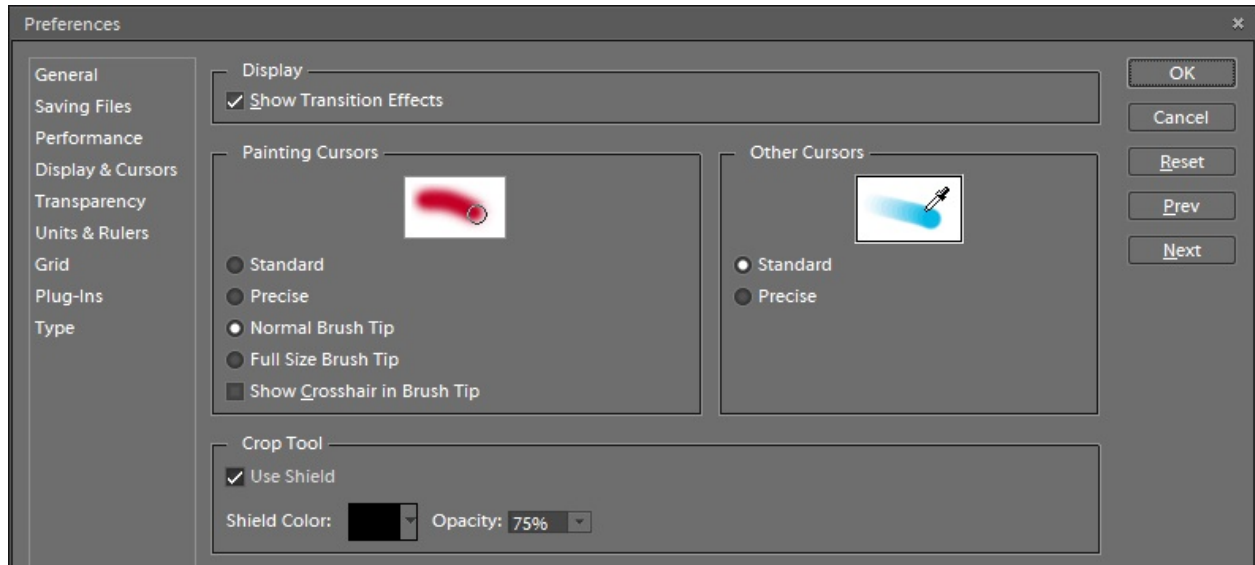


Figure 5

6. **Transparency (Figure 6)** option. While you can make changes here, I do not recommend it.

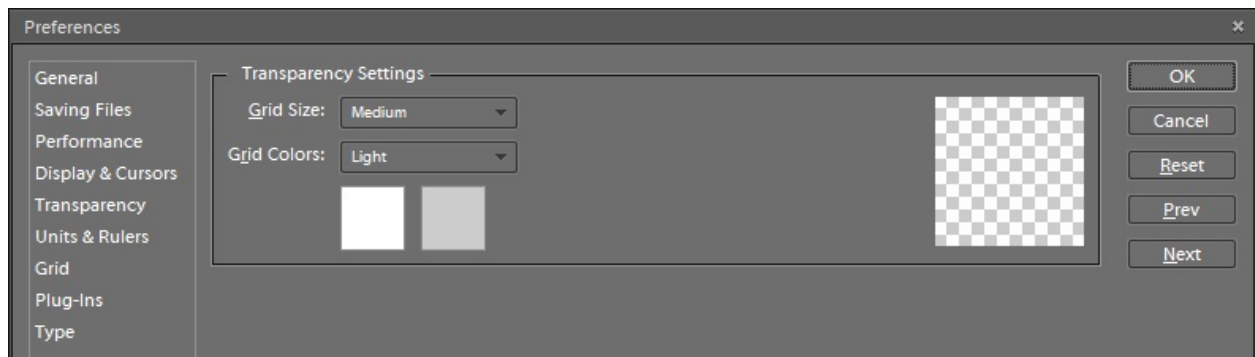


Figure 6

7. **Units and Rulers (Figure 7).** Here you can change what measurements (pixels or inches) are shown on the ruler, the print resolution and the screen resolution. Leave the print resolution to 300 pixels-per-inch (ppi) and the screen resolution at 72 dpi.

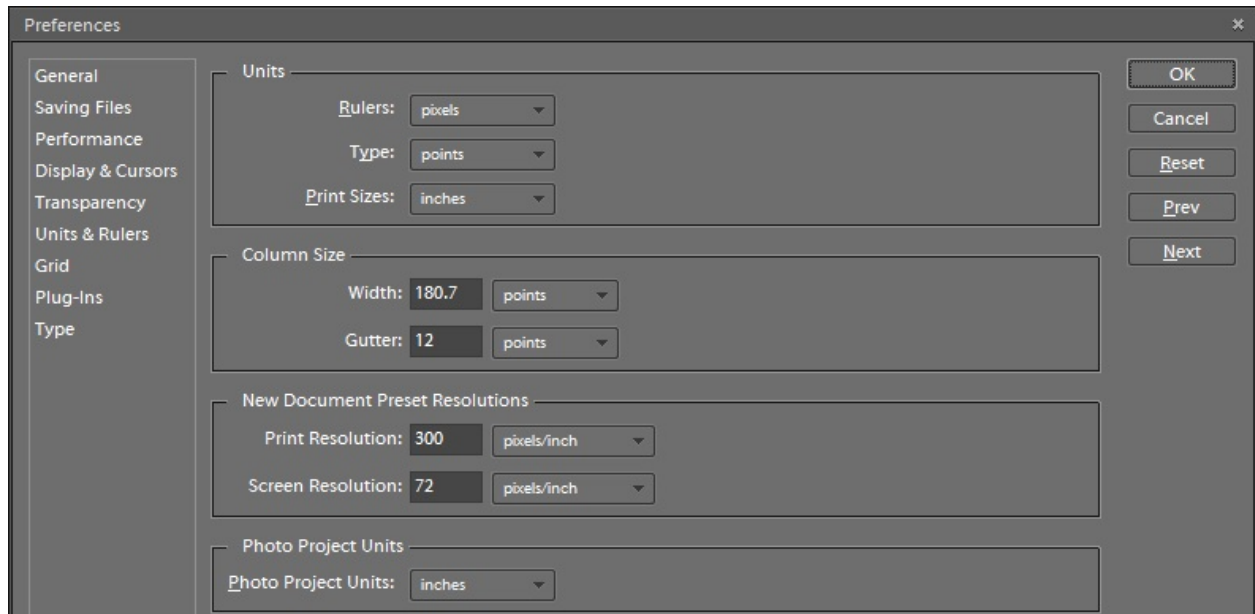


Figure 7

8. **Grid (Figure 8).** All these options should be left unchanged.

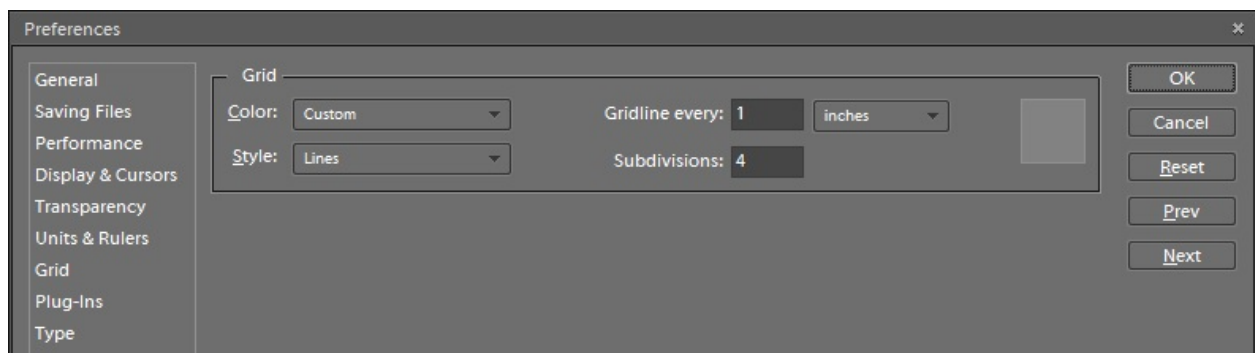


Figure 8

9. **Plug-ins (Figure 9)**. These options should be modified to ensure that the plug-ins are stored in the *C:\Program Files\Adobe\Photoshop Elements 6.0\Presets\* folder. By default, the plug-ins are stored in *C:\Documents and Settings\[User]\...* folder which means that each user will not have access to the plug-ins of the other user. (Plug-ins include any added brushes, styles and other items.) By listing the folder I recommend, all users can access any and all added plug-ins.

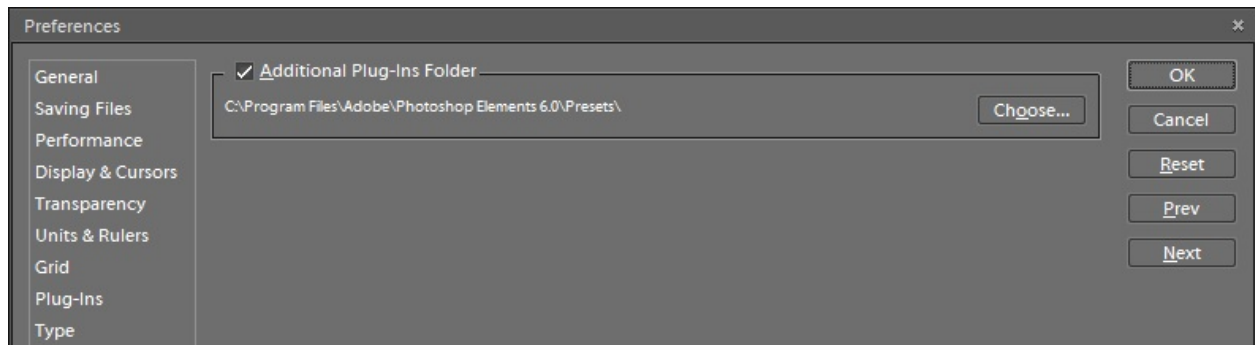


Figure 9

10. **TYPE (Figure 10)**. Don't change any options here unless you are going to be using languages from the Asian area.

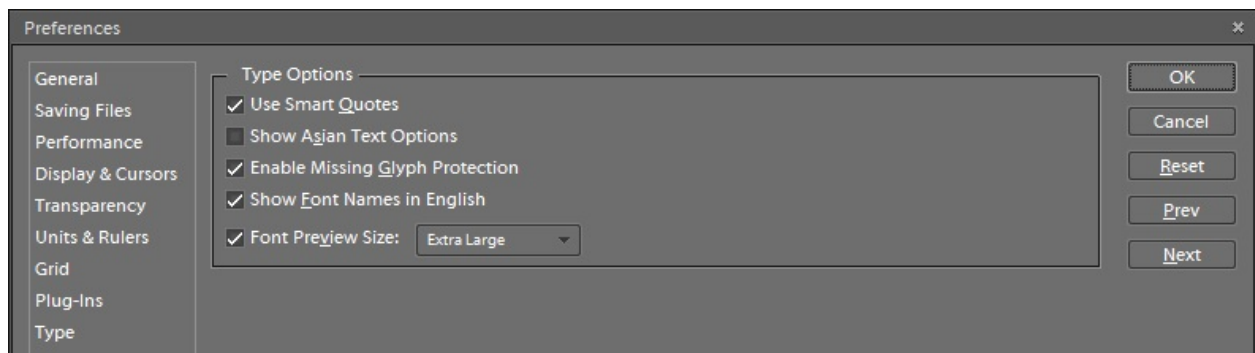


Figure 10