

Adobe Photoshop Elements EDIT & ENHANCE PHOTOS SETUP



© Darry D Eggleston, 813.677.2871, DarryD@darryd.com

With the increasing popularity of Photoshop Elements, it important that users know how to set up the program for maximum effectiveness *before* they begin using it. This article describes those procedures.

1. NEW PROJECT SCREEN

IF you select “New Project,” this is the screen you will see (**Figure 1**).

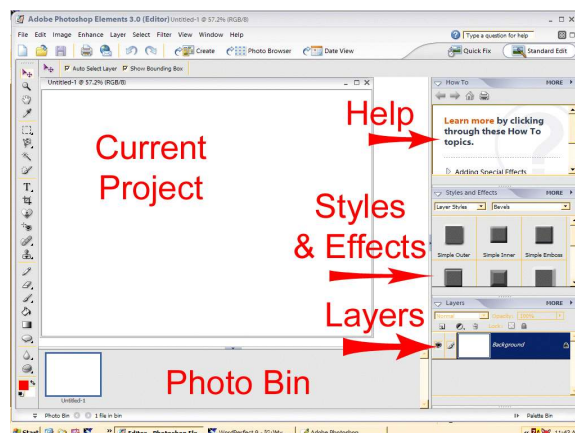


Figure 1

2. TURN OFF “SNAP TO GRID”

From the MenuBar, select View > Snap to Grid. IF there is a check there, click to remove it. Snap to Grid restrains your editing to click-and-drag, such when using the Rectangular Marquee Tool, to predetermined points. Removing it permits easier be specific when you make selection.

3. HIDE “PHOTO BIN”

The Photo Bin, at the bottom of the screen, serves to show the photos you are currently working on. Hide it (**Figure 2**):

- 1 RIGHT-click in Photo Bin area.
- 2 Left-click on “Auto-Hide.”



Figure 2

4. MINIMIZE HELP PALETTE

I recommend you minimize the Help palette. To do so, click on the downward arrow (**Figure 3**) on the left-side of that palette.

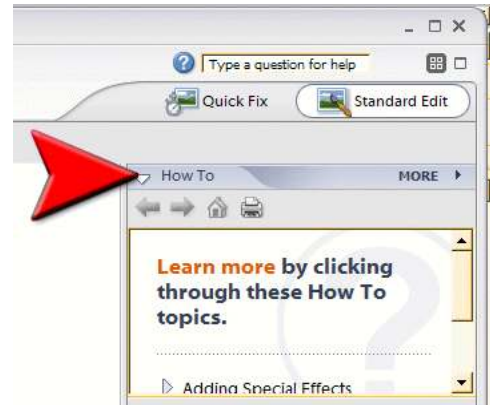


Figure 3

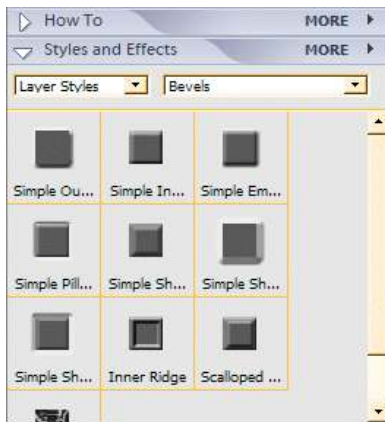


Figure 4

This permits easier viewing of the Styles & Effects palette. The default for the Styles & Effects palette is the Thumbnail View, but it is not very practical (**Figure 4**).

5. CHANGE STYLES & EFFECTS VIEW

Change the Styles & Effects to the List View (**Figure 5**):

- ① Click on “More ►”
- ② Click on “List View.”



Figure 5

6. NEW PROJECT SETTINGS

IF you select “New Project,” you’ll see a settings window (**Figure 6**). Here you can give the project a name and change its size.

Once you click on the “OK” button, you’ll see the working space in Figure 1.

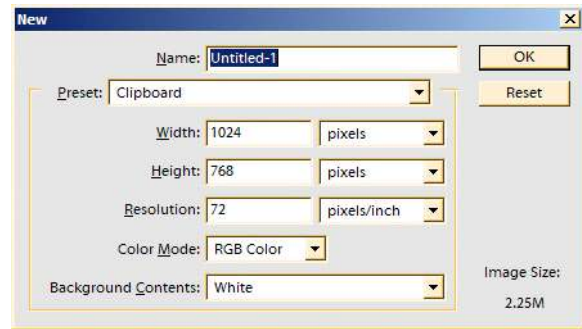


Figure 6

7. CREATE NEW LAYER

When I typed my name — after selecting the Typing Tool **T** — a new layer was created (Figure 7).

When you click on a creation tool, such as the Type Tool — a new layer is created.

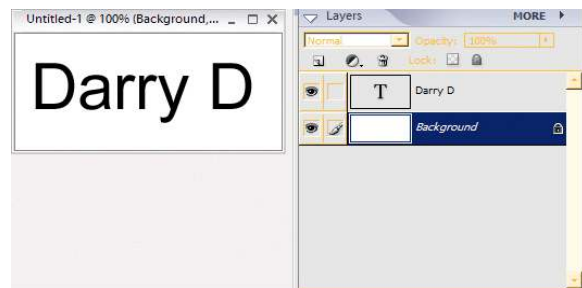


Figure 7

8. FLATTEN LAYERS

IF I want to save the work as a Joint Photographic Experts Group (JPEG/JPG) photo, I need to “flatten the layers” (Figure 8). To do it:

- ❶ RIGHT-click on the downward arrow-head in the Layers palette.
- ❷ Click on “Flatten Image.”

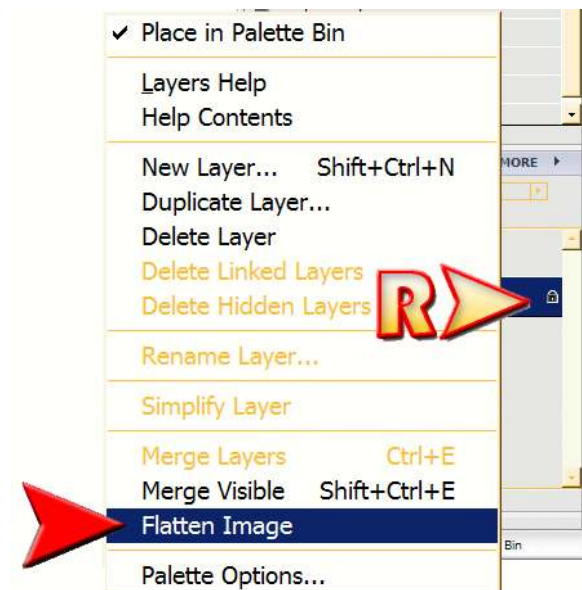


Figure 8

9. SAVE WORK

➤ IF you want to continue working on a project, save it as a Photoshop Graphic (PSD) as in **Figure 9**.

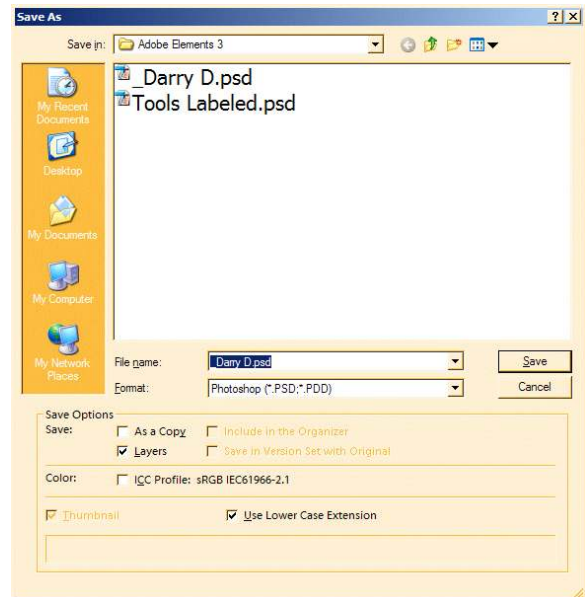


Figure 9

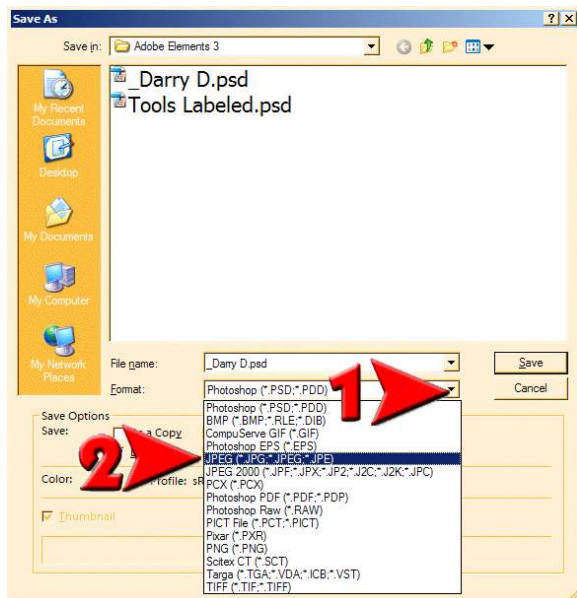


Figure 10

⚡ IF you want to share the work as a joint photographic experts group (JPG), be sure that you “Save As” a JPG (**Figure 10**).