



IMPROVED LIGHTING

© Darry D Eggleston, 813.677.2871, DarryD@darryd.com

Click on any blue, underlined text to go to its linked reference.

Looking for a quick way to improve the lighting in that digital photo?
This is it.

1. The original photo (**Figure 1**) was taken in a florescent-lit classroom with a 10x zoom at about 50 feet — without flash. As you can tell, it's acceptable; but, just barely.

I'll be working in the Editor for this entire process.



Figure 1

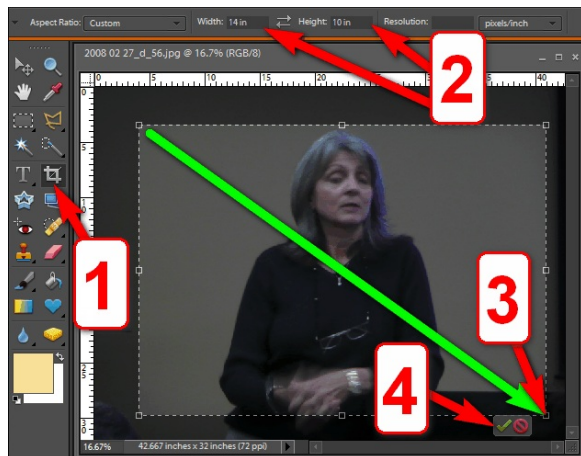


Figure 2

2. The first thing I did was crop it to get the unwanted things out of the photo (**Figure 2**):

- ① Select the Crop tool.
- ② By using "Custom," I ended up with a 14" wide x 10" tall selection.
- ③ I left-clicked, held, and dragged the Crop tool to make the selection.
- ④ Left-click on ✓ to accept the change.

¹ Editors: Peggy S. Eggleston, Dick Evans & Parker Monroe. Permission for reproduction in whole or in part is granted to organizations for internal, non-profit use provided credit is given to the author along with the copyright notice: Article reprinted with permission. Copyright © 2008 Darry D Eggleston, <http://DarryD.com>.

3. I opened the Palette Bin by selecting **Windows ► Palette Bin** from the Menu-Bar (**Figure 3**).

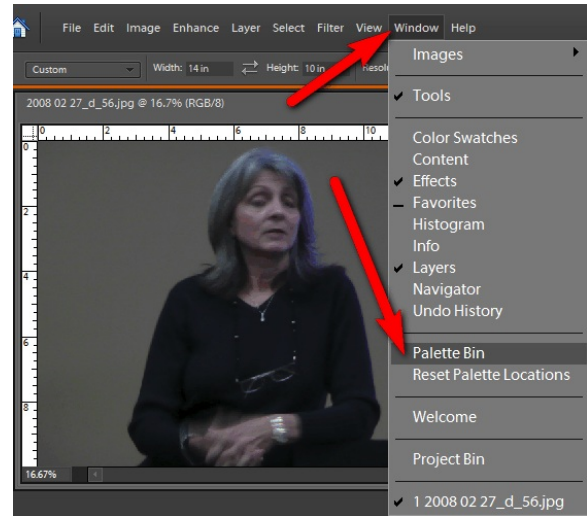


Figure 3

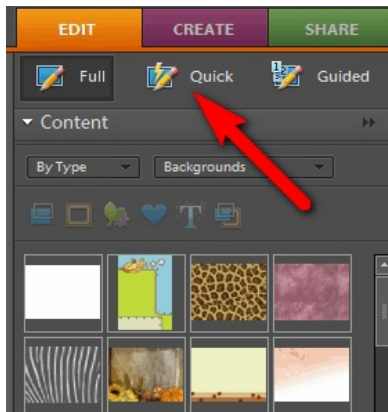


Figure 4

4. I selected the “Quick” edit (**Figure 4**).

5. From the Quick Correct, I selected — one-after-the-other — (**Figure 5**):

- ① Auto Smart Fix.
- ② Auto Levels.
- ③ Auto Contrast.
- ④ Auto Color.

Although Auto Sharpen is available, I elected not to use it.

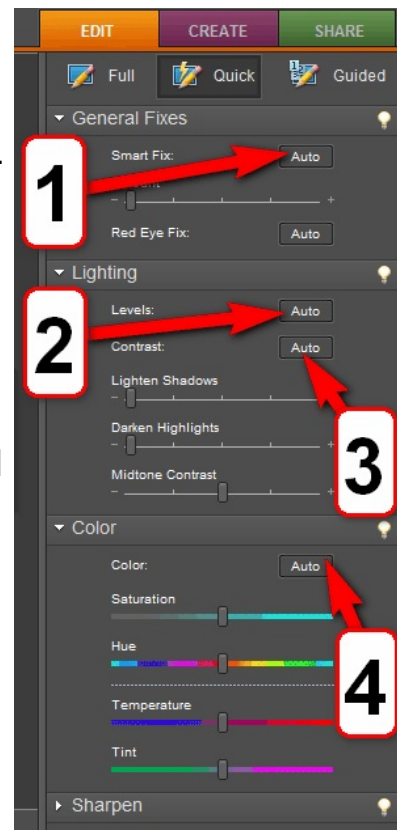


Figure 5

6. The side-by-side comparison offered by the Quick Correct shows the comparison (**Figure 6**).

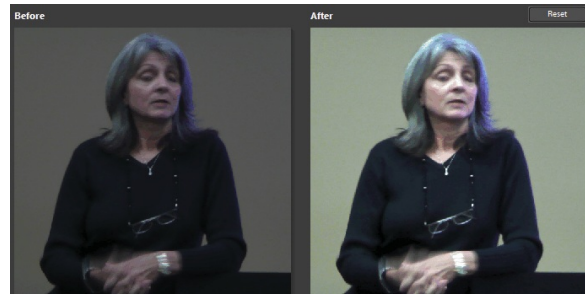


Figure 6

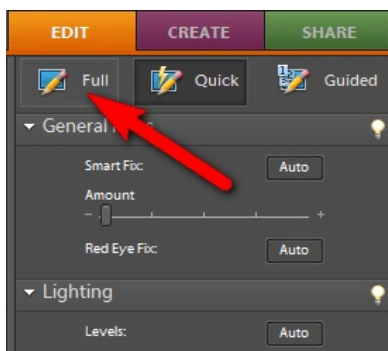


Figure 7

7. Now, I'll switched back to Full Edit (**Figure 7**).

8. To ease seeing the screen, I maximized the viewing area of the photo (**Figure 8**):

- ① Left-click on Magnifier.
- ② Left-click on "Fit Screen."



Figure 8

9. Next I adjusted the lighting (**Figure 9**) by selecting Enhance ► Adjust Lighting ► Shadows/Highlights.

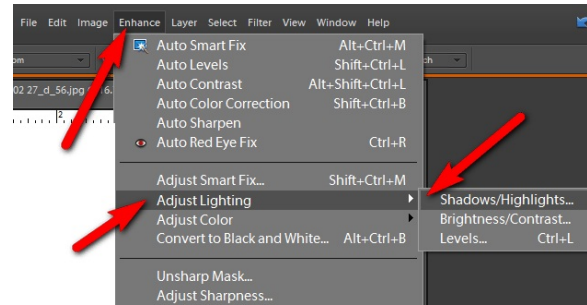


Figure 9

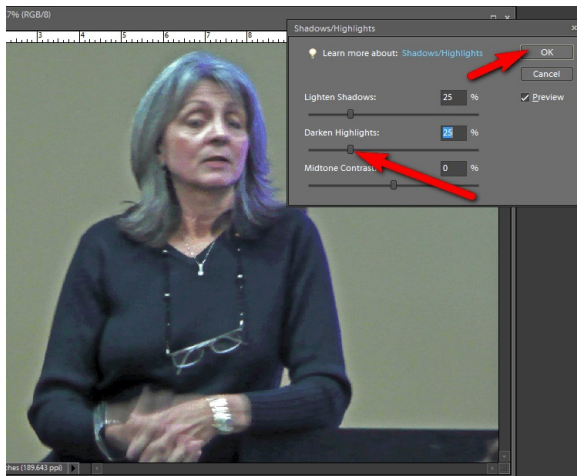


Figure 10

10. In the Shadows/Highlights window (**Figure 10**), I moved the Darken Highlights somewhat and then clicked on the "OK" button.

11. The original photo (**Figure 11**) is greatly improved by just changing the lighting (**Figure 12**). While I have more work to do, especially fixing the color of her hair, just changing the lighting makes this photo so much better.



Figure 11
Original



Figure 12
Final