

# Photoshop Elements 5.0

## DIVIDE SCANNED PHOTOS

© Darry D Eggleston, 2006, [DarryD@darryd.com](mailto:DarryD@darryd.com)



Elements 5 offers the ability to scan several photos at the same time and have the program separate them automatically for you. This process ensures that if you scan and separate 3 photos (JPG), you end up with 4 photos: 1 of all three in the same photo (the original scan) and 3 separate photos, one of each of those separated photos.

Here's how it works.

1. Open Elements, selecting the “Edit and Enhance Photos” option (Figure 1).



Figure 1

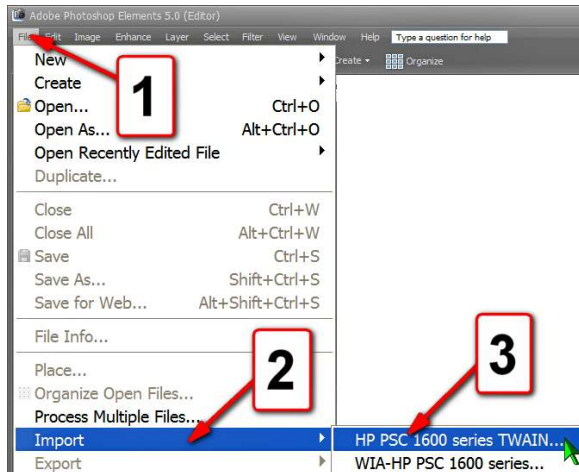


Figure 2

2. Select your scanner (Figure 2) by selecting:

- ❶ File
- ❷ Import
- ❸ [Your scanner]. In my example, I'm using an HP PSC 1620 scanner.

3. I'm scanning two photos in one session (Figure 3), so:

- ❶ Left-click, hold, and drag the corners of the scan to cover all photos.
- ❷ Change the resolution if you wish.
- ❸ Click on “Accept” button.

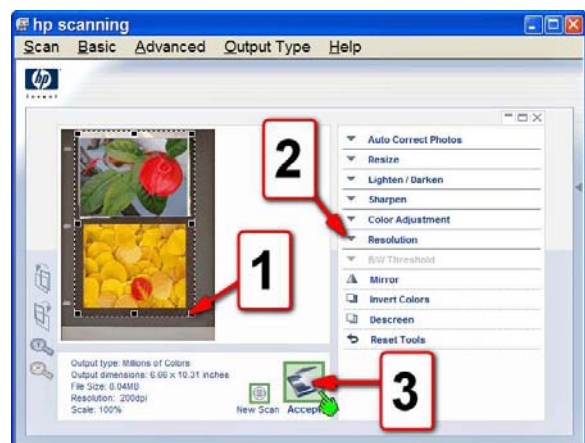


Figure 3

4. From the MenuBar, in Elements, select:

- ❶ Image
- ❷ Divide Scanned Photos.

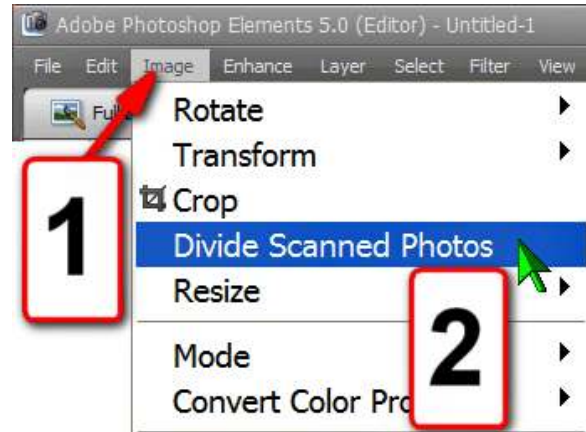


Figure 4



Figure 5

5. After scanning and separation, the photos are stacked with the first, separated one on top.

Deal with each as the separate photo that it is.

6. Save your work. Select File ➤ Save from the MenuBar in Elements, you'll see a "Save As" window (Figure 6):

- ❶ Ensure you're saving it into the folder you desire.
- ❷ Type a title for it.
- ❸ Select a format. JPG is usually your best bet.
- ❹ It will be saved into the Organizer unless you remove this ✓.
- ❺ It uses a lowercase ".jpg" unless you remove this ✓.
- ❻ Click on "Save" button.

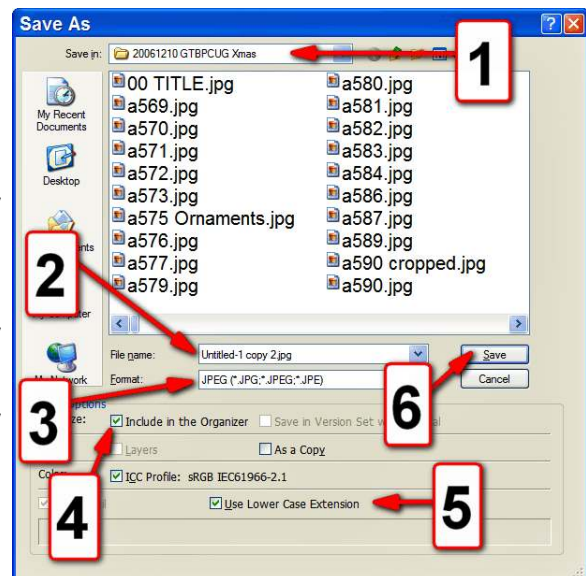


Figure 6