

Photoshop Elements 5

DIGITAL SIGNATURE

© Darry D Eggleston, 2006, DarryD@darryd.com



Wouldn't it be great to be able to quickly "sign" a photo you've taken or a graphic that you've created? Elements permits you to do that. Here's how.

1. Sign a blank, white sheet of paper.
 - A. Make the signature the size which you normally sign your name.
 - B. Make two signatures: make one with a fine-point ink pen and one using a felt-tip pen, like the "Sharpie Fine Point" pen. The first will be used when you're signing smaller works of art such as wallpaper or animated graphics. The second will be used on photos. Due the size of photos, you'll need a broader pen-stroke.

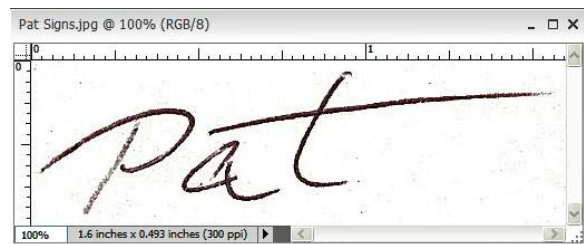


Figure 1

2. Scan the signature at 300 dpi
(**Figure 1**).

3. Open the graphic signature in Elements' Editor.

4. Clean up the signature, removing any stray marks or unintentional smudges.

5. Make an adjustment Layer (**Figure 2**).

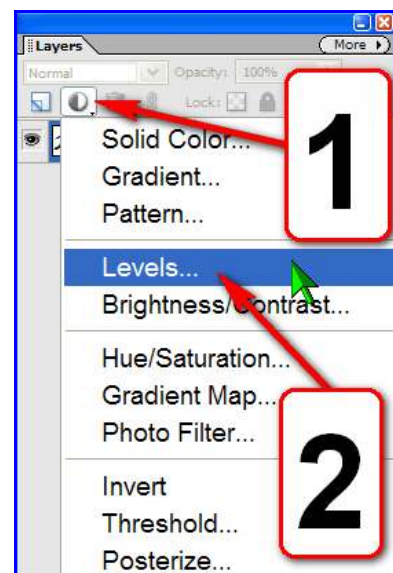


Figure 2

6. In the “Input Levels” (**Figure 3**):

❶ Move the white marker a little to the left of the shown limit.

❷ Move the black marker a little to the right of the shown limit.

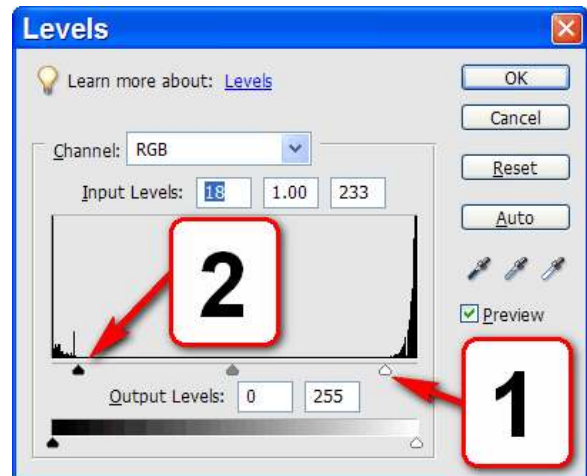


Figure 3

7. Use the Magic Wand to select the white space *outside* of your signature.

8. Use Select > Inverse to select the signature.

9. From the MenuBar, select Edit > Define Brush from Selection (**Figure 4**).

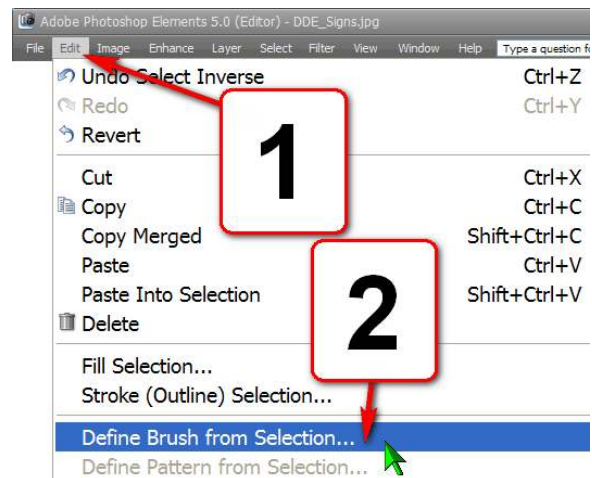


Figure 4



Figure 5

10. In the “Brush Name,” give the new brush a name (**Figure 5**). You’ll see a preview of what the signature will look like.

USE THE SIGNATURE

11. In a new document or photo, create a new layer (Figure 5).

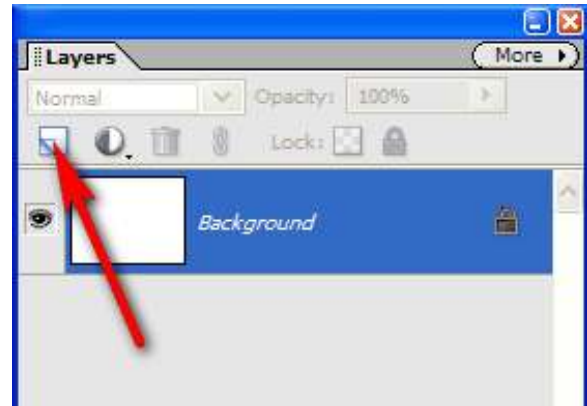


Figure 5

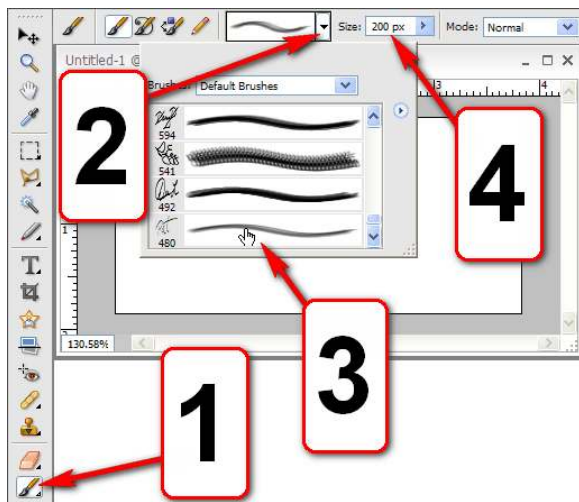


Figure 6

12. Select the brush (Figure 6):

- ❶ Click on the Brush tool.
- ❷ Click on the downward arrow next to the brush selection options.
- ❸ Click on your digital signature brush.
- ❹ You may have to adjust the size of the signature.
 - 100 pt for wallpaper of 1024x768.
 - 594 pt for 10 megapixel photos.

13. Click on the document wherever you want the signature to appear (Figure 7).

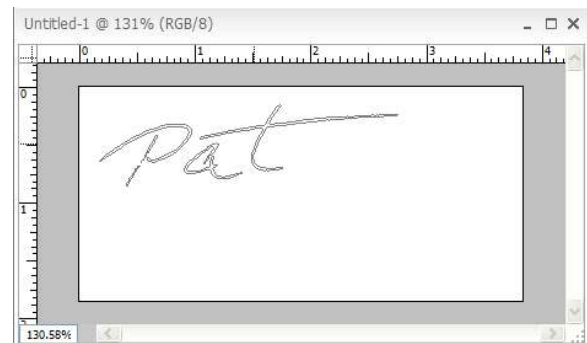


Figure 7

14. Creating the signatures is one thing, but if you do not save the brushes, once you select any other brush group, you will lose that signature. So save it (**Figure 8**):

- ❶ Click on the Brush tool.
- ❷ Click on the drop-down arrow next to the brush group you're using.
- ❸ Click on the circled-arrow for options.
- ❹ Click on "Save Brushes...."

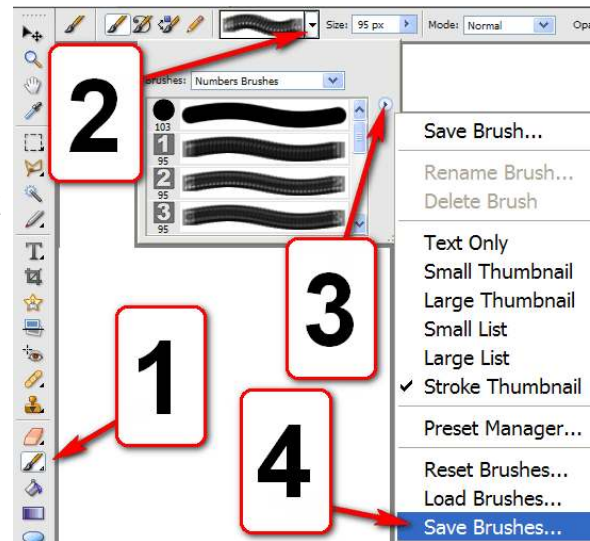


Figure 8

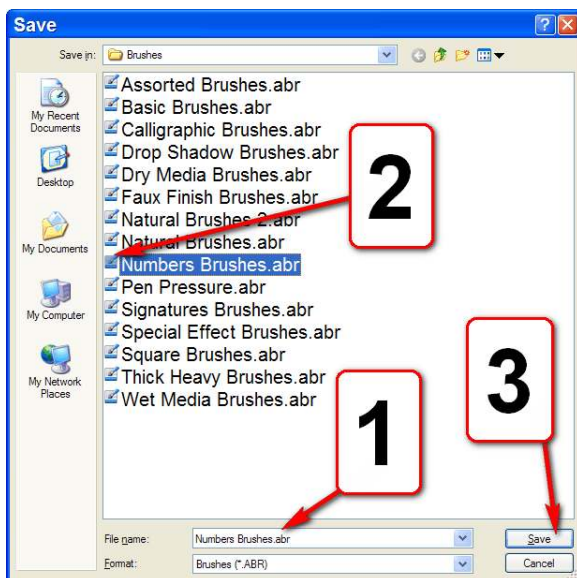


Figure 9

15. Name the Brush Group (**Figure 9**):

- ❶ Type a name for the group... or ...
- ❷ If the group already exists, click on it.
- ❸ Touch the *Enter* key, on the keyboard, or click on the "Save" button.

16. If the Group already exists, touch the *Enter* key, on the keyboard, or click on the "OK" button to confirm your desire to overwrite the existing file (**Figure 10**).



Figure 10