

Photoshop Elements 5.0

COLOR ERASED USING DUPLICATE LAYER

© Darry D Eggleston, 2006, DarryD@darryd.com



1. Open a color photo (Figure 1).



Figure 1



Figure 2

2. Create a duplicate layer using the Ctrl+J keys or by selecting Layer ► Duplicate Layer (Figure 2). It is the layer that will be converted to black & white.

3. Remove the color from the top layer. From the MenuBar, use Enhance ► Convert to Black and White.

Be sure the top layer is the active layer.

I selected the “Vivid Landscape” option (Figure 3) because I like the look of its result.

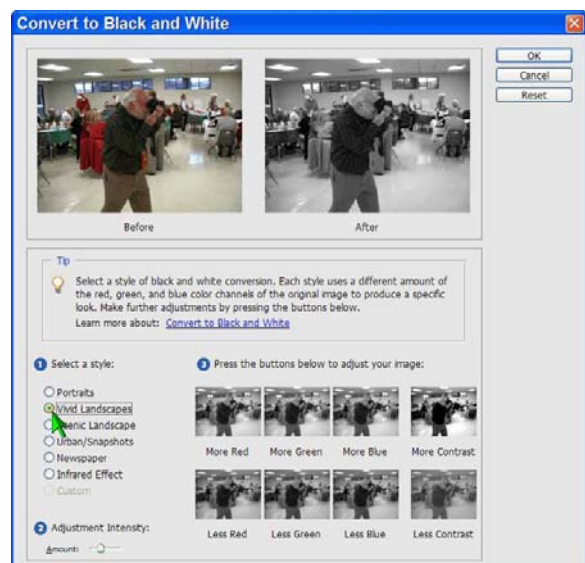




Figure 3

4. Once done, the top layer is black & white (Figure 4).

5. Erase the areas on the top layer where you want to see color.

★ Use the Polygonal Lasso Tool  select the area and the Eraser tool  with a fairly soft brush, or


★ Use the Selection Brush  and delete the selection for a harder effect.



Figure 4



Figure 5

6. The result is color on black & white. (Figure 5).

7. Flatten the layers (Figure 6).

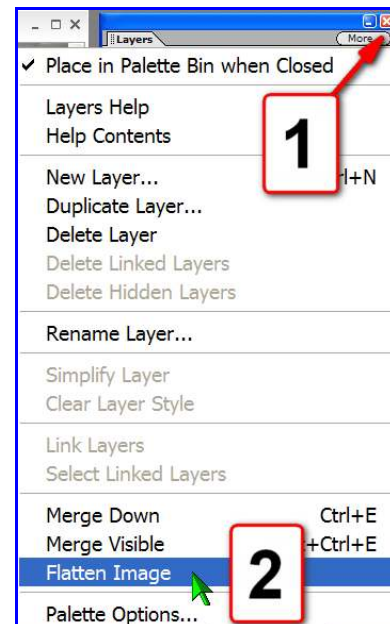


Figure 6

8. From the MenuBar, select *File > Save As* (Figure 7).

Selecting “Save As” avoids the error of overwriting an existing without intending to do so.

9. Name the file (Figure 8):

❶ Ensure it will be saved into the folder where you want it to be.

❷ Type the name you wish it to have.

NOTE: I use the “b” as in d728**b** to indicate that a photo is in black & white.

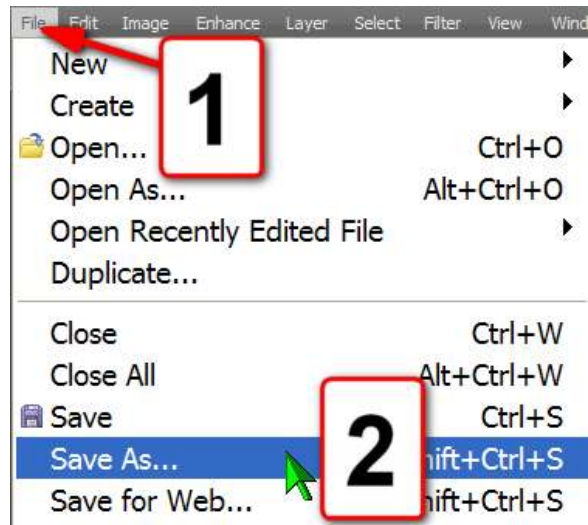


Figure 7

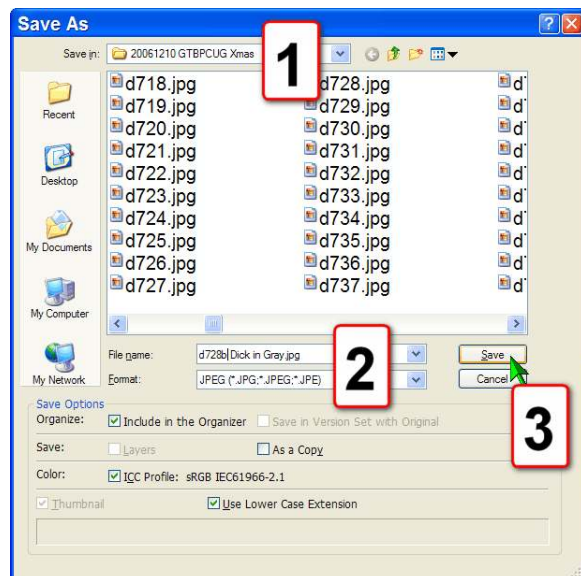


Figure 8

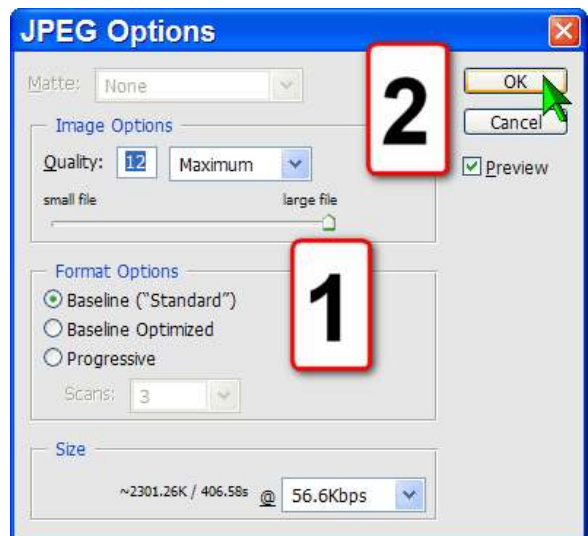


Figure 9

10. Ensure you save it at maximum quality (Figure 9):

❶ Ensure that “Image Options” is 12, Maximum.

❷ Click on “OK” button.