

# Photoshop Elements 5.0 SPEEDUP STARTUP

© Darry D Eggleston, 813.677.2871, [DarryD@darryd.com](mailto:DarryD@darryd.com)<sup>1</sup>



You can save as much as 30 seconds off the startup time of Photoshop Elements by changing the window that appears at startup. Here's how.

In the lower-left corner of the Welcome screen (**Figure 1**):

- 1 Click on "Start up in" drop-down.
- 2 Click on either Editor or Organizer. Most likely, you will click on the Organizer.

The next time you open Elements, it will open in that chosen mode.

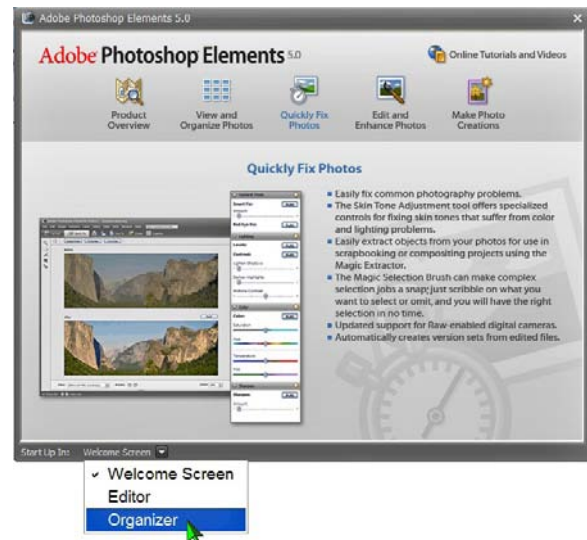


Figure 1

## CHANGE BACK

If you change your mind and want the Options to show when you startup Elements:

- 1 In the Editor, from the MenuBar, Left-click on Window ► Welcome.
  - 2 The Welcome screen will be displayed (**Figure 1**).
  - 3 Select "Welcome Screen" from the same menu you used to disable it.
- When you close and reopen Elements, you'll be given the Options again.

---

<sup>1</sup> Editors: Peggy S. Eggleston, Dick Evans & Parker Monroe. Permission for reproduction in whole or in part is granted to organizations for internal, non-profit use provided credit is given to the author along with the copyright notice: Article reprinted with permission. Copyright © 2007 Darry D Eggleston, <http://DarryD.com>.