

# APDPROXY.EXE ERROR

© Darry D Eggleston, 813.677.2871, [DarryD@darryd.com](mailto:DarryD@darryd.com)

Click on any blue, underlined text to go to its linked reference.



If you have gotten this error (Figure 1) while working in Elements, don't worry too much.

The ConnAPI.dll problem with APDProxy.exe is caused by a Photoshop Elements 6 component used to communicate with Nokia phones. Elements 6 needs a *Nokia.dll* file to work, but Adobe does not include it and responds that it is not Adobe's problem. It is supposed to be fixed in Photoshop Elements 7 which is due out in October 2008.

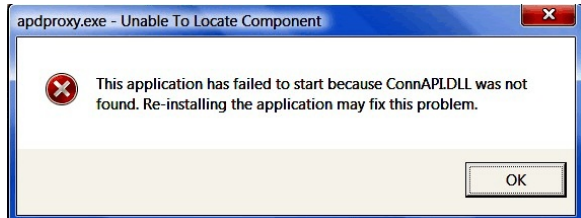


Figure 1

APDProxy.exe is a non-essential process, but should not be terminated unless suspected to be causing problems.

If listed as a separate component in Windows XP's Add & Remove Programs, it can be removed with no problem. Remember to restart your system after doing this.

It is not listed separated in Windows Vista's Programs & Features.

However, I have removed APDProxy.exe from the Startup in Windows XP, Windows Vista (32- and 64-bit) systems with no adverse impact upon Elements' operations.

Here's how to do it:

❶ Run the "Msconfig" command.

➤ In Windows XP, select Start > Run and type "msconfig" in the pane. The letters are not case-specific, so you can type all capitals, initial caps or all lowercase letters.

➤ In Windows Vista, type the "msconfig" into the Search window.

---

<sup>1</sup> Editors: Peggy S. Eggleston, Dick Evans & Parker Monroe. Permission for reproduction in whole or in part is granted to individuals and to organizations for internal, non-profit use provided credit is given to the author along with the copyright notice: Article reprinted with permission. Copyright © 2008 Darry D Eggleston, <http://DarryD.com>.

② Click on the “Startup” folder (Figure 2).

③ Left-click on the check to the left of “apdproxy.exe”.

④ Click on “OK” button (Figure 3).

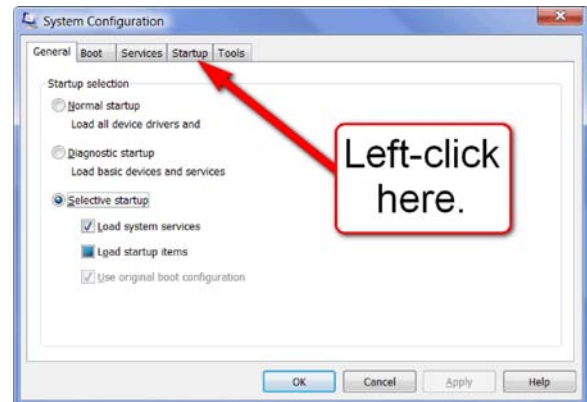


Figure 2



Figure 3

⑤ Restart your system. Whichever Windows you’re using, always restart your system after adding or after removing any program.

## ALTERNATIVE PROCEDURE

1. In Windows Explorer, create the folder:  
c:\program files\adobe\photoshop elements 6.0\moxplugins\Disabled
2. Move this file into that folder:  
c:\program files\adobe\photoshop elements 6.0\moxplugins\  
nokiamanager.mox

**NOTE:** This disables the ability to directly download files from Nokia phones, but it keeps the ability to download from USB devices like cameras, card readers, from TWAIN devices (scanners), and from Windows Image Architecture (WIA) devices.

## RECOMMENDED BY ADOBE

**SOLUTION 1:** Remove the NOKIAManager.mox file.

- ❶ Exit Photoshop Elements.
- ❷ Open the C:\Program Files\Adobe\Photoshop Elements 6.0\moxplugins folder.
- ❸ Move the NOKIAManager.mox file to the Recycle Bin, or another location such as your Desktop.
- ❹ Restart your computer.

**NOTE:** The NOKIAManager.mox plug-in file is required for Adobe Photo Downloader to download photos from a Nokia mobile phone. If you use a Nokia mobile phone, use Solution 2. If you later decide to use a Nokia mobile phone, either move the NOKIAManager.mox file back to the original location or reinstall Photoshop Elements.

**SOLUTION 2:** Install or reinstall the Nokia PC Suite software.

**NOTE:** Only use this solution if you connect a Nokia mobile phone to your computer.

In order to communicate with a Nokia mobile phone, your computer must have the Nokia PC Suite software installed. Install the software to allow Adobe Photo Downloader to communicate with the phone and download photos from it. If you have previously installed Nokia PC Suite but are still getting this error message, uninstall and reinstall the software or upgrade to a newer version. For more information about Nokia PC Suite, contact Nokia or visit the Nokia web site.

**SOLUTION 3:** Disable Adobe Photo Downloader.

**NOTE:** This solution will prevent Adobe Photo Downloader from starting when Windows starts, and it will not appear automatically when you plug in a camera, card reader, flash memory drive, or other memory device. When you plug in one of these devices, and in order to download photos into the Organizer, you will need to start Photoshop Elements and choose File ► Get Photos or Videos From Camera or Card Reader.

- ❶ Open the Organizer in Photoshop Elements.
- ❷ Choose Edit Preferences Camera or Card Reader.

- ③ Disable the Auto Launch Adobe Photo Downloader On Device Connect option.
- ④ Click OK.