

Internet Explorer 7

ADDING MENUS

© Darry D Eggleston, 813.677.2871, DarryD@darryd.com



The Internet Explorer 7 comes without a Menu Bar or Links(**Figure 1**). Here is how to add those tools.

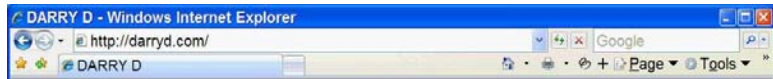


Figure 1

1. First, add the MenuBar (**Figure 2**):
 - 1 RIGHT-click on the Favorites/Tabs Bar.
 - 2 Left-click "Menu Bar."



Figure 2

2. The Menu Bar (File, Edit, View ... Help) appears (**Figure 3**). So, let's add the Links Bar:
 - 1 RIGHT-click on the Menu Bar.
 - 2 Left-click "Links"



Figure 3

3. Now that the MenuBar and the Links have been added (**Figure 4**), we want to combine them so that we can see more of the visited website:
 - 1 RIGHT-click on the Favorites/Tab Bar.
 - 2 Left-click "Lock the ToolBars."



Figure 4

4. Left-click, hold, and drag the “Links” to the right of the MenuBar (**Figure 5**).

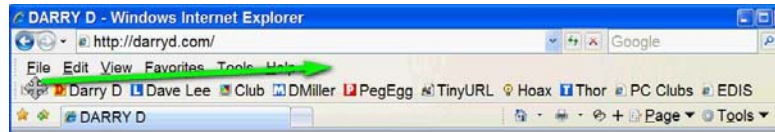


Figure 5

5. Lock the ToolBars (Figure 6):
 ❶ RIGHT-click on the Favorites/Tab Bar.
 ❷ Left-click on “Lock the ToolBars” to lock the changes into place.



Figure 6

6. To add Favorites to the Links using the MenuBar (**Figure 7**):
 ❶ Go to the site.
 ❷ On the MenuBar, left-click on Favorites > Add to Favorites.

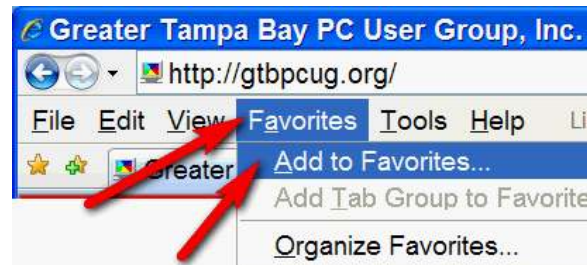


Figure 7

7. To add a Favorite to the Links using the Favorites star (**Figure 8**):
 ❶ Left-click the Star.
 ❷ Left-click, hold, and drag the desired Favorite to the Links bar.

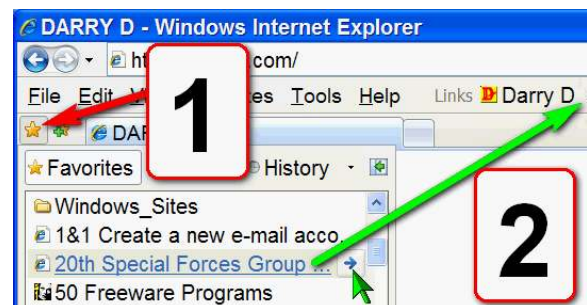


Figure 8

8. If you add more Favorites than the Links can handle, it will create a ">>" which if clicked upon will reveal a drop-down menu of those additional Favorites (**Figure 9**).



Figure 9