

Internet Explorer 7

CHANGE FONT

© Darry D Eggleston, 813.677.2871, DarryD@darryd.com



You can change the default font to make reading some screens easier upon your eyes. (The *Default* is that which occurs unless the user can and does change it.)

By default, the font is Times New Roman.
In this lesson, we will change it to Arial.

1. Select Tools > Internet Options (Figure 1).

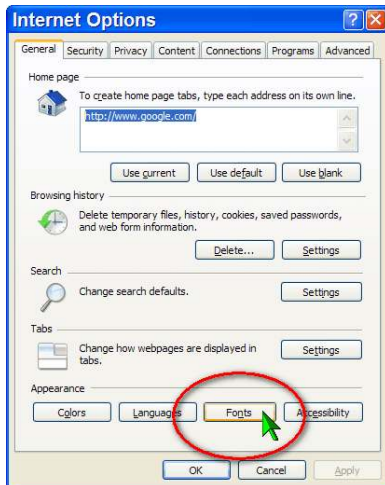


Figure 2

2. Click on the “Fonts” button, at the bottom of the new window (Figure 2).

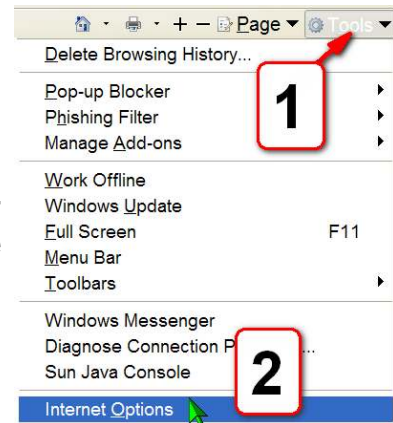


Figure 1

3. You can either left-click and hold on the upward arrow (Figure 3) or click on any font in the left pane and type “AR” and you will see the choice of Arial.



Figure 3

5. Click on "Arial" (Figure 4) and Touch the *Enter* key, on the keyboard, or click on the "OK" button.

6. You can compare the differences that a font change will make by comparing the effects upon my website (Figures 5 & 6).

Which one is easier to read?

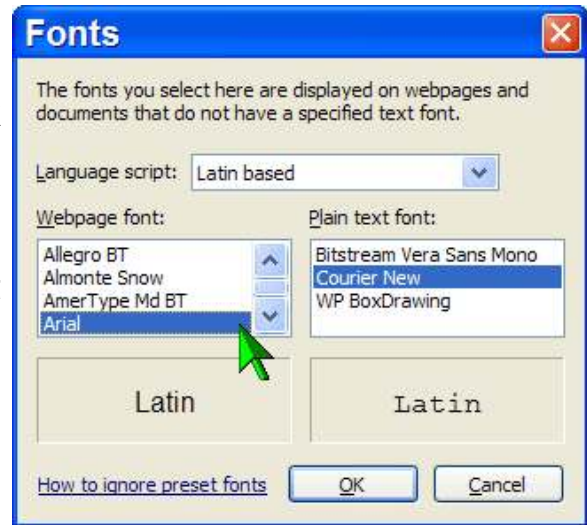


Figure 4

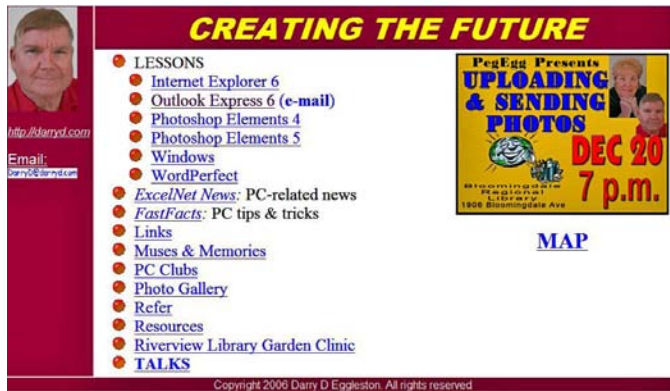


Figure 5
BEFORE



Figure 6
AFTER